

Tardebigge and Bentley Parish Magazine

www.tardebiggechurch.org.uk 'Dean Hall receiving his Bishop's Certificate from Bishop John, 9th October 2019'



November 2019 - £1



Grosvenor House is a detached Victorian property, nestled between the peaceful villages of Alvechurch and Barnt Green, and is home to 25 residents.

Grosvenor House

Spring View Care

A high quality local nursing home

At Grosvenor House, we provide small homely environments where our residents are at the heart of everything we do. It is our aspiration to provide nursing homes where we ourselves would be happy to stay.



Spring View Care is proud to announce that Grosvenor House has been listed as one of the top 20 care homes in the West Midlands in 2015 and 2016



Grosvenor House: Aqueduct Lane, Coopers Hill, Alvechurch B48 7BS **Tel: 0121 447 7878**
Website: www.springviewcare.co.uk Email: mercy@springviewcare.co.uk

Church Services

Sunday 3rd November (All Saints)

11.00am Traditional Holy Communion with **Sunday Funday**
6.00pm Evensong

Sunday 10th November (Remembrance)

8.00am Holy Communion
9.30am **Café Church** in the *Church Hall*
9.30am Service of Remembrance at *St. Mary's*
10.45am **Service of Remembrance**
6.00pm Evensong

Sunday 17th November (2 Before Advent)

11.00am **Family Service**
6.00pm Evensong

Sunday 24th November (Christ the King)

8.00am Holy Communion
9.30am **Worship For ALL**
11.00am Traditional Morning Prayer
6.00pm Evensong

Sunday 1st December (Advent)

11.00am **Traditional Holy Communion Gift Service with Sunday Funday**
donations of new toys gratefully received for distribution by the Salvation Army
6.00pm Evensong

Sunday 8th December (Advent 2)

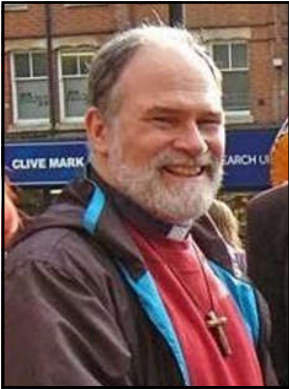
8.00am Holy Communion
9.30am **Café Church** in the *Church Hall*
11.00am Traditional Morning Prayer
6.00pm Evensong



November



From Richard, the Team Rector



November is a transition month, beginning with Bonfire Night and ending with our eyes firmly on the Christmas season. With few people away on holiday, the roads are busy and most of us are hard at work one way or another. October and November are usually our wettest months, but November is also quite dark, with less than half as many sunshine hours as September, and a few frosty mornings to prepare us for the cold weather of December to February. As usual at church we will not only be preparing for our Christmas services but also planning for the following year and looking forward with hope as we seek to move forward into the Lord's future for us. Hope was one of the themes of the

Archbishop of Canterbury's visit to Worcester Diocese at the beginning of October 2016, and as we look at our comparatively small churches in a divided nation it is an important theme for us all.

Back in 2016, the most striking and moving of the Archbishop's engagements was a question and answer session with Jeremy Vine in the Worcester Arena. Faced with some tough and challenging questions Justin Welby did not shrink from difficult topics, nor did he hide behind a wordy vagueness. On Saturday morning he faced another grilling, this time on issues relating to business at a breakfast held at Worcestershire CCC; the Archbishop was a member of the Parliamentary Commission on Banking Standards and has written extensively on business ethics. Some of the points he made during these meetings were:



- The Church in England is no longer shrinking: 'I think the tide is turning in this country. We are seeing many churches growing and particularly I would say that in the last seven or eight years one of the most exciting things has been that we have seen the churches more active in social structures again, in the social events of this country, than at any time since 1945.' Since then the Church has been increasingly investing in prayer, and work with children and young people.

- There should be no stigma attached to anyone with a mental health condition; it is an illness like any other: "you wouldn't tell someone with a broken leg to pull themselves together and you shouldn't do so with someone with a mental illness either". The church has been working hard to help reform the way people with mental health issues are treated in the criminal justice system. The church has also been increasingly active in raising awareness of human slavery and sex trafficking
- Archbishop Justin told of standing at the graves of those killed for their faith. He has been active in raising awareness of the persecuted church, especially in the Middle East, where their numbers have been decimated through war and the activity of radical Islamicists. We have also seen a major terrorist attack on the church in Sri Lanka, while attacks on Christians in Northern Nigeria are frequent and deadly.
- A firm Francophile, he regretted the Brexit Vote but sees it as an opportunity for the Church to have an influential role in the formulation of a new positive vision for the country's future. He has since built on this by urging MPs on all sides of politics to resolve Brexit in a fitting manner, a message that does not appear to have been heeded. Justin Welby's call for a new and clearer vision for this nation beyond Brexit seems to be as relevant as ever.

Paternity testing in 2016 showed that Justin Welby's biological father was not Gavin Welby, but Anthony Montague Browne. The Archbishop said that he was not disturbed by this discovery but did admit that it had come as "a complete surprise", adding: "I know that I find who I am in Jesus Christ, not in genetics, and my identity in him never changes."

Archbishop Justin's commitment to the future of the Church was demonstrated by his visit to Redditch where he spent time with children and families and St Stephen's Church. We are now in the midst of a strategy to grow our ministry to families in Redditch Holy Trinity parish as well as at Tardebigge, with the aim of bringing a future and a hope to those who will take us forward to the middle of the century.



Richard



Wardens' World

November 2019

What a busy month for your wardens at Tardebigge! With the end of the dry and mild summer, a period of relatively light maintenance came to an end as the buildings and grounds responded to the change in the weather and a number of problems surfaced in a short space of time. The heavy rain which ended the long summer rapidly flooded St. Bartholomew's roof, resulting in water pouring down the *inside* of the south wall. Having established by extensive exploration in the attic and tower that the roof itself is still sound, we concluded that a main gutter was blocked, and one of our steplejack partners was fortunately available in short order to check, and to clear five buckets of blockage from the main south gutter drain! At the same time, we have been looking at the lighting in the church. A failed spotlight in the chancel led us to replace it with an LED unit, much more economical and with a longer life than the previous bulbs. On top of this, a new timer for the outside lights, testing LED bulbs for the main nave lighting, cleaning the lantern by the gate and resetting the car park light timer after the summer cable fall have kept several of us busy with electrics this month!

Meanwhile, down by the churchyard gate, the heavy rain undermined the foundations of a boundary wall, and with the weight of ivy on top, it simply fell over. A contractor is being sought while we discuss with the diocese whether or not we can replace it with a fence... Then, with the grass growing rapidly thanks to a combination of plenty of rain and mild temperatures, the churchyard mower seat broke... With a quick response by our usual contractor however, we now have a fully-serviced mower ready for Matt to get back in the saddle. Which leads us on to more good news – Tardebigge came sixth out of twenty-eight Worcestershire churchyards in the CPRE's Best Kept Churchyard competition! We scored 81%, with comments from the judges including 'The largest churchyard and difficult to maintain to a high standard', "Good marks for neatness of grass around graves...average marks for flowers on graves and absence of weeds. Top marks for number of seats, provision of rubbish bins, and overall impression." No prizes, sadly, but a tribute to all the hard work which goes into keeping the place looking good whatever the weather throws at us!

We are also very grateful for the help we had for our Harvest thanksgiving services at St. Mary's and St. Bartholomew's, and in particular to David Stubbings for his organisation of another great Harvest Lunch, where almost 40 people again tucked in to this great community feast, and raised over £100 while doing it! Thanks also to the in-house flower arrangers who decorated the churches; the beautiful arrangements displaying vivid autumnal colours received many compliments and were appreciated by all.

We look forward to welcoming you to our services over the coming weeks, as the Christmas season is fast approaching. Our special Christmas services are as follows:

Sunday 1st December

11.00am Holy Communion Gift Service with Sunday Funday (our Sunday School)
donations of new toys gratefully received for distribution by the Salvation Army

Sunday 8th December

9.30am Advent Café Church in the Church Hall (*breakfasts from 9.00am*)

Sunday 15th December

9.30am Carol Service at St. Mary's, Lower Bentley

Sunday 22nd December

6.00pm Carols by Candlelight

Christmas Eve

4.00pm Family Christingle with Carols
10.00pm Late Night Communion (1662)

Christmas Day

11.00am Family Communion

Chris and Jane

Christmas Tree Festival at Worcester Cathedral

Tardebigge Community is participating in the festival again this year and we'd love you to make decorations for our tree! Our theme this year is 'The Three Wise Men (Magi)'.

Please feel free to use your imagination; for example, you could perhaps create crowns, camels, stars, and gold

Decorations will be needed by December.

For more details, please contact Jane Hall (07980 358252)



Parish Safeguarding Officer: Sarah Carless (07789 174099)
Email sarah@doff.org.uk

**WORRIED?
NEED TO TALK?**

Call Childline on
0800 1111



childline

ONLINE, ON THE PHONE, ANYTIME
childline.org.uk | 0800 1111

It's free, you don't have to tell
us your name – and we're
here to talk all day and night,
whatever your worry.



Need to talk?

Free* and confidential advice, information
and support on any aspect of parenting
and family life via our helpline and live chat.

0808 800 2222



*Through life's ups and downs,
we're with you, all the way*

www.familylives.org.uk

© Family Lives | Reg company number: 5817762 | Reg charity number: 1577222 | Reg in England and Wales.
CWO Helpline, 44 St East Road, London SE1 8AA | *Free helpline and most mobile networks.



THE CHURCH
OF ENGLAND
DIOCESE OF
WORCESTER

Listening Service

for those affected by sexual abuse

You can expect a Listener to:

- Listen to you sensitively, help you share your experience and take what you say seriously
- Guide you to find further help, for example, if you feel you need professional counselling
- Inform you about how to raise concerns about the abuse, if you choose to do so
- Maintain confidentiality except, of course, where this is restricted by the requirements of the law

I will listen - you will be heard

What is meant by 'confidentiality'?

- Confidentiality and secrecy do not mean the same thing
- Confidentiality is of the highest importance but it cannot be absolute in every circumstance
- Some agreed factual information that the meeting has occurred will be recorded and held securely and confidentially
- Any revelation that raises the concern of the listener, that the person being listened to has abused or is a potential abuser, must be referred to the Diocesan Safeguarding Adviser in line with national policy and our legal obligations

Listening Service

For further information on our Listening Service please
contact Diocesan Safeguarding Adviser Hilary Higton
T: 07495 060869 E: higton@cofe-worcester.org.uk
www.cofe-worcester.org.uk

Complaints: [www.cofe-worcester.org.uk/diocesancompendium/
safeguarding/complaints-whistleblowers/](http://www.cofe-worcester.org.uk/diocesancompendium/safeguarding/complaints-whistleblowers/)



THE CHURCH
OF ENGLAND
DIOCESE OF
WORCESTER



Kingdom People
Bev. (compendium) | Justice | Freedom
www.churchofengland.org



Welcome!

TabbyCats Pet Hotel is a licensed family run boarding establishment designed and built around the security, comfort and needs of its feline only guests . . . home from home

TabbyCats
Pet Hotel

33 Brotherton Avenue,
Webheath, Redditch, B97 5SA
Tel: 07971 633732 • Email:
tabbycatspethotel@gmail.com

Opening Hours
9.30am to 12 Noon
and
4.30pm to 5.30pm

Except
Thursday & Sunday
9.30am to 12 Noon



'Though it is the smallest of all seeds, yet when it grows, it is the largest of garden plants and becomes a tree, so that the birds come and perch in its branches.' Matthew 13: v 32

Pips
PIPS

at St. Philip's Church, Webheath

Stories, Songs and Games
For 3-7 year olds

Every 2nd Thursday of the month
3.45pm - 4.40pm

Starting with a drink and a biscuit!



St. Philip's, Church Road, Webheath, B97 5PD

www.stphilipswebheath.org.uk

Contact Rev. Richard Clark (07970 823462) email: trhtredditch@gmail.com



Tardebigge Community Hall

Modern, superbly equipped building with large hall,
committee room and kitchen available for hire.
Perfect for wedding receptions, parties and meetings.

For more information and photos, please see our website
or leave a message on 07763 446902

Email: tchbookings@gmail.com

www.tardcomhall.org.uk

MGO



Gardening Services

Professional gardening services – all work considered, including:

- . Lawn Mowing . Hedge Cutting
- . General Weeding . Border Maintenance
- . Small Trees

Fully insured, CRB checked – reliable service guaranteed

For a free quote contact Matthew Massey

Tel. 01527 836149 / Mobile: 07875 973601

Email: mgoservices@yahoo.co.uk



Bumps, Babes and Toddlers

at St. Philip's Church, Webheath



Thursday mornings 9.30am-11.30am

Suggested donation £2 per family
Includes tea, coffee and biscuits.



St Philips Bumps Babes
and Toddlers



St. Philip's, Church Road, Webheath, B97 5PD

www.stphilipwebheath.org.uk

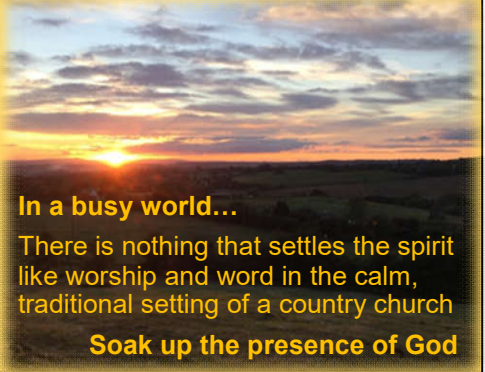
Contact Rev. Richard Clark (07970 823462) email: trhredditch@gmail.com

Evensong



From the Book of Common Prayer
On 1st, 2nd, 3rd & 4th Sunday at 6pm

St. Bartholomew's Church,
Tardebigge



In a busy world...

There is nothing that settles the spirit
like worship and word in the calm,
traditional setting of a country church

Soak up the presence of God

Annual Magazine subscriptions

£10 collected or hand delivered; £16 by post.

Payments can be made pay by cheque (*made payable to Tardebigge PCC*), cash or via BACS (*quoting MAGA & your surname as the reference please*)

(Account no: 70799599 Sort Code 40-38-07)

For enquiries contact Jane Hall
(contact details inside back cover)

*Thank you for supporting
St. Bartholomew's and St. Mary's Churches*

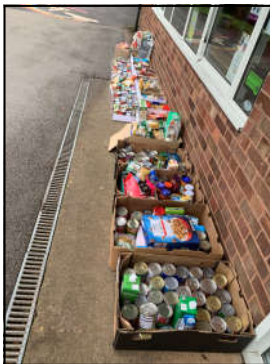
December/January Magazine

Please send your articles and items to our central email address:

contact@tardebiggechurch.org.uk by FRIDAY 15th November

News from School

As part of the new SIAMS framework (Statutory Inspection of Anglican and Methodist Schools), the whole school community needs to express how it lives its Christian vision and engages with its neighbours in the wider community. Since March this year we have been regularly supporting Catshill Foodbank, which is an independent Foodbank run by Catshill Baptist Church that works in partnership with other local churches, community volunteers and organisations. Tardebigge First School is just one of the official collection points for the Foodbank, with a collecting bin in the office reception area for anyone wishing to make a donation of non perishable food.



Food donations received
at our Harvest celebration

It was therefore wonderful that children brought in even more donations of food when we celebrated Harvest by having a whole school assembly and many parents and carers attended. Each class sang a Harvest song and we closed with prayers led by the school and Church. We really appreciate St. Bartholomew's Church making the church available for our assemblies, so at the end of our Harvest celebration we announced there would be a retiring collection towards the enormous cost of heating. We will continue to take retiring collections for the church at our Christmas plays and other key celebrations.

J.E.H

Contact details:

Telephone: 01527 872886

Email: office@tardebigge.worcs.sch.uk

Website: www.tardebigge.worcs.sch.uk

Head Teacher: Julie Cutler



Church Legacy

A lasting gift to Tardebigge Parish



'And now these three remain: faith, hope and love.
But the greatest of these is love.'

1 Corinthians 13: 13



'Where your treasure is, there your heart
will be also. Luke 12: 34

A lasting gift to St. Bartholomew's and St. Mary's

Once you have made provision for your loved ones, you have the opportunity to make a lasting gift to God, by leaving a legacy to His church. A gift in your Will to the church is one of the most valuable and lasting ways you can continue to support its mission and ministry in the community.

A gift can be an expression of your gratitude and thanksgiving towards God, and can help keep the parish and transform its future. We would be most grateful to receive:

- Legacies which can be used for the general purposes of Tardebigge Parish.
- Legacies specifically for mission and children's work.

N.B. If legacies are restricted, the money cannot be used for anything other than that specified.



 **THE CHURCH
OF ENGLAND**

www.churchlegacy.org.uk



If you would like to talk to someone in confidence about setting up a legacy for Tardebigge, please contact one of the Church Wardens.

Alternatively you can contact the National Legacy Officer,
at the Church of England on 08445 870875

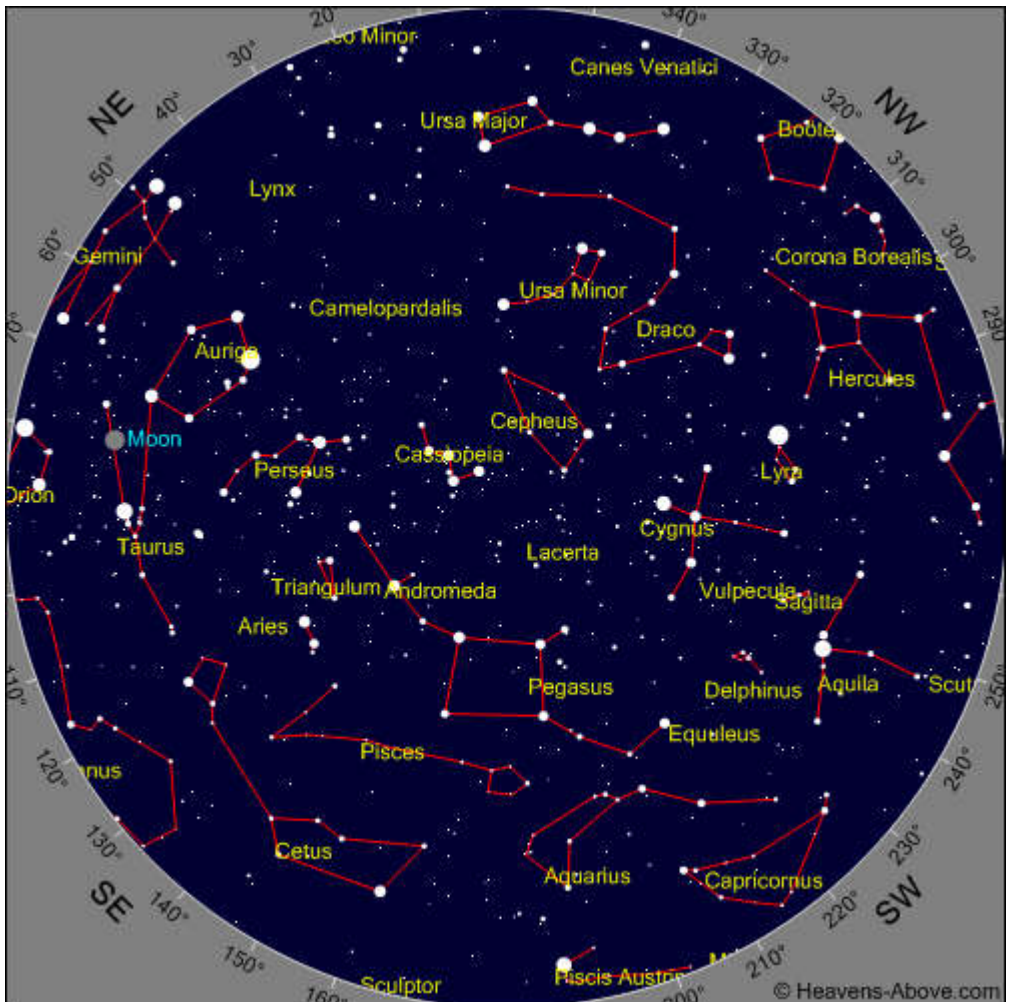
Celestial Corner

Now here we are in November. We have passed All Hallows, or Halloween, the old Celtic festival of Samhain, marking the first day of winter. As if to prove the point, November is the month when the first of the winter constellations put in an appearance. But more of them in the next two months. At Samhain the people used to set an extra place at the table for the souls of the departed and would light bonfires to drive away evil spirits and hold at bay the darkness of winter, while mother nature slept in the earth. But what of the November sky.

The southern horizon, from SE to SW is dominated by the large faint constellations of Cetus (the whale), Pisces (the Fishes), Aquarius (the water bearer), Capricorn (the goat) and high in the South Pegasus (the winged horse). Low down in the South is Piscis Australis (the southern fish) with the lowest 1st mag star seen from Britain, Fomalhaut. You will find Fomalhaut by following a line from the two right hand stars of the square of Pegasus down towards the horizon. As you can see from the map, apart from Fomalhaut there are no 1st mag stars in the constellations we have mentioned so far, most are 3rd mag or below, with the exception of a couple in Cetus, two stars in Andromeda and the four stars of the square of Pegasus. Actually, one of the four stars of the square has, for some unknown reason, been designated to the constellation of Andromeda.

If we look to the Northern horizon (the top of the page) we can see Ursa Major (the great bear), incorporating the plough, at it's lowest point. Cassiopeia is almost overhead and this is a good time, once the moon is out of the way later this month, and if you can get away from street lights on a crisp, clear night, to look for a faint fuzzy object lying between Cassiopeia and Perseus (the Hero). This is two star clusters close together, labeled New General Catalogue (NGC) Nos 869 and 884, known as the sword handle, denoting the sword that Perseus used to kill the Gorgon, Medusa, with snakes on her head instead of hair. Medusa's head is marked by a star in Perseus called Algol, nicknamed "The Winking Demon" as it's brightness dims for a few hours every 2.87 days before returning to normal. This is because Algol is not only a double star, but the brighter star of the pair is also double and to complicate matters it is a binary pair, orbiting a common center of gravity, and it is this pair that causes the fluctuations in brightness that gives Algol it's nickname! Algol's normal brightness is mag 2.1, the same as the next bright star to it's right in Andromeda, but fades to 3.4 mag at each "wink".

Between Algol and the end star of Andromeda lies a nice open cluster, M34. At mag 5 it is an easy target for 10x50 bins. Not far from the star marking Pegasus' nose lies the 6th mag globular cluster, M15. (Remember Pegasus is lying on his back!) You will have to do some searching for the 5th mag open cluster M39 not far from Deneb in Cygnus. M29 you might find easier, at mag 6.6 it lies close to the centre star of the cross of Cygnus. The star marking the Swans' eye at the base of the cross, Albireo, is a lovely double. The brighter star is amber while it's fainter companion is greenish. There are some nice "coloured" doubles up there, unfortunately most need a telescope to see them properly.



Now is the best time to look for our friends M31 and M33. They are, as we said last month, members of the local group of galaxies. M31 has a mag of 3.4 and to find it look at the 2nd star from the square of Pegasus, then look above it to a 4th mag and on to a 5th mag star and M31 lies close to it. If you have not got bins you may need to use the trick of averted vision. That is looking slightly to the side of where you would normally look! M31 has two satellite galaxies, also in the local group, M32 and M110, both are mag 8 elliptical galaxies and need a telescope to be seen. M33 lies in the constellation of Triangulum (the Triangle), below Andromeda. It has a mag of 5.7. To find it, go back to the star in Andromeda and draw a line down to the apex of the triangle, M33 lies roughly 2/3rds of the way. Please remember that most double stars and Galaxies etc need at least 10x50 bins to see them. Telescopes obviously show more of them, especially with all the light pollution from street lights, security and flood lights and even garden lights and lights left on all night in offices etc.

There are no planets on view at 8pm. Venus sets soon after the Sun, followed by Jupiter and Saturn around an hour and two hours later respectively. Mars and Mercury are morning objects, Mars in Virgo and Mercury is in Libra moving in to pass behind the Sun. Mars has not long appeared from behind the Sun as the Earth begins to catch it up on our yearly journey. The map is for 8pm on the 14th. You will notice that the Pleiades, or Seven Sisters cluster is well up, another sign that winter is upon us!

R.B.

Anagrams: Worcestershire Settlements

- | | | |
|-------------------|-----------------------------|-----------------|
| 1. Groom verbs | 6. Ken ma chef | 11. Roper she |
| 2. Misted drinker | 7. Bed rug trios | 12. El by dew |
| 3. Vase hem | 8. Rub telly news (2 words) | 13. Secret row |
| 4. Bawdy oar | 9. Mr navel | 14. Beggar diet |
| 5. Toot purrs | 10. Wit orchid | |



The Spring Greens

The Spring Greens is our ladies' group for women of all ages with a young outlook. We usually meet in the Church Hall on the third Thursday of the month at 7.45pm. For more details please contact Jane Hall (07980 358252); or Email janeehall73@gmail.com



New members always welcome!

Jane Hall



On 17th October we welcomed Mary and Sheila who came to talk to us about the work of a clinic in Namusaala, Uganda which they are very much involved with. The clinic does amazing work supporting disabled children. 'The Cherish Fund' (our adopted charity) also supports this clinic.



Earlier in the day, Mary and Sheila had given a presentation and talk to pupils in Years 3 and 4 at Tardebigge CE First School.



The Evergreens

Evergreens is a group that meets in the afternoon several times a year and is open to all people, though it tends to be those who are retired who come along.

If you need further information please ring either
Vivien Mackenzie (0121 445 1245) or Mary Watkins (0121 445 3075).

Our next meeting will be on Saturday 7th December, which will be our Christmas lunch, which will take place in the Church Hall, gathering at 12.30pm for a 1.00pm start with tickets £10 each, available from Vivien and Mary. Please put the date in your diary! As usual, if you would like further information or a lift, please contact us.

Like last year, raffle tickets will not be sold.

Vivien (0121 445 1245) or Mary (0121 445 3075)

ST BARTHOLOMEW'S CHURCH TARDEBIGGE

The Evergreens' Christmas Lunch

Saturday 7th December 2019

12.30pm for 1.00pm in the Church Hall



Ticket: £10

A photograph of a field of red poppies in front of a stone wall. The poppies are in various stages of bloom, some fully open and some just starting. The stone wall is made of large, grey blocks with some moss or lichen growing on it. The background is slightly out of focus, showing more of the wall and some greenery.

Poppies

**A field of scarlet poppies
Beneath a changing English sky
Reminds me of the soldiers
Who went courageously to die,
Some soldiers were still in their teens
When, a century ago,
They marched towards a great adventure,
They now lie where poppies grow.**

**The battlefields of the Great War
Where a generation died
Are emblems now of history
Whilst those who walk beside
The graves in distant cemeteries
Remember those who lie
In unmarked graves in foreign fields
Where poppies bloom and die.**

**Brief is the life span of the flower
Yet every year unfailingly
The poppy's scarlet beauty
Is there for all to see,
Every year the poppies die
Yet rise again to grow
In an English meadow or in Flanders fields
Every Summer, row on row.**

L M Wadlow

November 1978

Vicar: Rev. David Copley; **Reader:** Mr Peter Frowley

Church Wardens: Mr John Hedley and Mr David Taylor

PCC Secretary: Mr Roger Bunting **PCC Treasurer:** Mr Keith Milligan

* * *

Stephen & Tessa

We thank Stephen and Tessa for all they have done in the last five years while they have been in the parish, working particularly in Webheath. They have endeared themselves by their friendliness and concern for people. There has been an open house and at the Parsonage there has been a welcome for everybody.

Stephen has had a policy. He has known where he was going in his leadership of St. Philip's Church, Webheath, and by gentle, firm persuasion he has taken the people with him. By his own guidance and his commending of Christian stewardship he has placed the finances of St. Philip's on a strong basis. With unflagging zeal he has worked for the building up of Christian commitment in individuals and in the corporate life of the church. This has been seen in the forming of house groups for study and discussion and action, and in the reordering of the worship of St. Philip's to accord with the needs of modern times.

It has been also seen in Stephen's wider vision of the ministry of the whole Church in Redditch to the people of Redditch which has led to his working with others towards the possible formation of a Team Ministry by Webheath, Headless Cross and Crabbs Cross, and in his active involvement in the Redditch Council of Churches of which he has recently been the Chairman.

Stephen has helped people to see more clearly that the preaching and living of the Christian faith within the context of a local church has a bearing upon larger community issues. His membership of the Redditch Council of Voluntary Service led to his becoming secretary of the Redditch Hospital Action Committee. In the pressure which he and his committee kept up on the authorities Stephen said that the primary concern was to see that a new General Hospital for Bromsgrove and Redditch should be built as soon as possible, and that the site upon which it should be built was of secondary concern; though Stephen and the committee naturally favoured for reasons which they argued eloquently the site already earmarked in Redditch New Town.

Another project for which Stephen will be remembered in Redditch is Crossways, the refuge for wives who are the victims of violence in marriage.....

Our very best wishes go with Stephen and Tessa, Claire and Lucy. May Stephen be happy in his work and may they all be happy in their new home among new friends. And above all may the peace and blessing of God be with them always.

David Copley

Advent Fayre

Saturday 30th November

10am – 1pm

**St. Philip's Church,
Webheath**

**Books, Crafts, Tombola, Toiletries
Raffle, Cakes, Bacon Baps
...& more**



FREE visit to see Father Christmas

Entrance 50p (Children FREE)

Prize Draw

**Bring this flyer on the day for entry
to win a bottle of champagne**

www.stphilipswebheath.org.uk

Platinum Wedding Anniversary

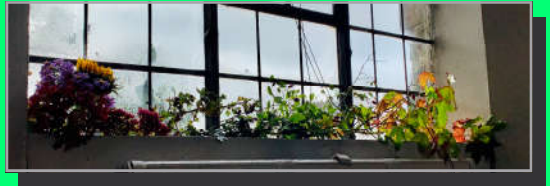


Mary and Brian Foster have been married for seventy years.

The couple were married at St. Bartholomew's Church, Tardebigge on 3rd September 1949 by the Rev. W Hartley, Curate of Tardebigge. Their Wedding Reception was held at the Foxlydiat Arms in Webheath.

Mary and Brian celebrated their 70th anniversary with a meal on Saturday 31st August 2019 and were joined by sixteen family members. It was appropriate that they celebrated their Platinum Anniversary at the Foxlydiat too.

Congratulations and best wishes from us all. xxx



Harvest Flowers



Hilary Ann Hammond

16 Jan 1935 – 22 Sept 2019

Hilary was born in Kings Heath, Birmingham on 16 January 1935, to parents Gladys and Raymond Teather, and a younger sister to Tilly. Hilary's first school was King's Heath Primary School. Her parents divorced when Hilary was 6 years old, and this event was to define the pattern of her childhood.

Hilary's maternal grandparents Thomas and Rebecca March, master bootmakers originating from Northampton, lived at 12 Farley Street in Leamington. They provided a stable safety net as Gladys found housekeepers work. Hilary and Tilly were moved to board at St Joseph's Convent School. The regime under the Nuns was hard, up early and mopping floors at the age of 7. It was here that Hilary contracted scarlet fever and then measles and had to stay in the school's isolation hospital. Tilly caught diphtheria in the first term and was sent home.

Hilary returned home at Easter to find Tilly had been sent to board at the Birmingham Blue Coat School, a school for orphans or children with a single parent. Hilary quickly followed. Hilary rarely saw her Mum and recalled her visiting on some Sundays when Hilary would see her Mum from a distance in the Church congregation. However Hilary recalled a happy and settled time at the Blue Coat between 1942 and 1945. After being moved to a village school in Northamptonshire, Hilary came back to her grandparents' house in Leamington with her Mum and left school aged 15.

Hilary started work at Bobby's Department Store on The Parade in Leamington, still there today as House of Fraser, and living with her sister Tilly in their flat on Regent Street. Hilary also became a member of Leamington Fencing Club - Fencing would become her lifelong passion.

Hilary met Colin at a dance at the Chesford Grange Hotel near Leamington in 1956. In more recent years Dad spoke of how he loved Hilary's unique sparkle. She had a fabulous imaginative approach to life – you never quite knew what she would do next. She was full of surprises with her own special flare. Hilary introduced Colin to fencing. Lifelong friendships were made. Club matches, competitive fencing and coaching – they never looked back.

Hilary and Colin married on 17 May 1958 at St Marks Church, Milverton in Leamington. Always making the most of what they had, they had a small wedding with the reception at their flat at 30 Heath Terrace, with refreshments on sale or return. Tilly made Hilary's wedding dress and the bridesmaids' dresses. This type of economy was proudly laughed about.

Colin had completed his architect training at Sermons in Birmingham. He moved to work at



Warwick District Council and this move was instrumental in the purchase of the first family house in St Mary's Close, Southam. Daughters Stephanie, Julia and Lucy were all born at Warnford Hospital in Leamington.

Hilary supported Colin in his career and with three young girls under the age of 5, the going was tough and tiring. We moved to 9 Beverley Close, Astwood Bank when Colin's work took him to Redditch Development Corporation and later to Birmingham City Council. Beverley Close was to be the family home for 47 years. Mum and Dad celebrated their 58th wedding Anniversary on 17th May 2016.

Hilary instilled in her daughters the importance of learning and working hard at school to secure a good education. She used to say no one can take your education away from you and it will allow you to find work and to be financially independent. Childhood was settled and happy attending Astwood Bank Primary School, The Ridgeway and The Abbey High School in Redditch.

We all looked forward to our annual summer holiday, camping and caravanning in North Wales, Cornwall and, the big trip driving through France to Spain - Dad towing the van with his Ford Cortina. On occasion Mum didn't necessarily regard the caravan as a holiday! And there was always the fencing, Thursday evenings at Redditch Fencing Club, training at Birmingham University and lots of competitions.

In 1974 Hilary went to work at Redditch Development Corporation. Working and saving she eventually bought her own first car which was to become the enabler for Hilary to establish her own business as a professional fencing coach teaching in clubs and schools county wide across Hereford, Worcester and Warwick. Hilary was a massive driving force and leader in the fencing world. Securing Sports Council Funding for Clubs, establishing new clubs like Redditch Youth Fencing Club and creating mini protégés who rippled out across the fencing world. Hilary was involved in so many Fencing Club Committees, Hereford & Worcester County Fencing Union and Birmingham Fencing Club and the West Midlands Fencing organisation. Her energy in promoting the sport and coaching the youngsters was relentless and immense. She was passionate about every aspect of the sport. Creating facilities and opportunities for fencers of all ages, abilities and disabilities. It all mattered. Hilary coached well into her 70s and as she slowed down on the fencing new interests came to the fore. Floristry had been a lifelong past-time and in latter years she really enjoyed flower arranging at St Bartholomew's Church in Tardebigge, which included demonstrations and teaching.

Family parties and celebrations a plenty and she doted on her grandchildren - Josh, Holly, Tom, Louis, Georgia and Eva. Getting involved hands on, special visits to Granny and Grandpas and nurturing them, passing the same valuable lessons on to the next generation.

Hilary was diagnosed with vascular dementia eight years ago. The disease took hold quickly. Her courage, faith and acceptance were immense. Acknowledgement needs to be paid to the specialist dementia team at Mill House, Kington who have supported Mum and the family throughout.

Hilary had a warmth of heart and a natural brilliance at bringing people together. She enriched people in her own inimitable style. She was born in an era where women stayed at home to bring up their families. Mum did that so well and also forged her own career being re-knowned in the fencing world.

Hilary was full of love, energy and her special Hilary sparkle; she was a fabulous Wife, Mother and Granny; and she leaves her amazing fencing legacy - all intertwined in the fabric and community of Worcestershire.

Stephanie, Julia & Lucy

October Anagrams: Answers - Famous Battles

- | | | |
|--------------|-------------------|------------------|
| 1. Agincourt | 6. El Alamein | 11. Marston Moor |
| 2. Waterloo | 7. Naseby | 12. Borodino |
| 3. Hastings | 8. Pearl Harbour | 13. Trafalgar |
| 4. Culloden | 9. Bosworth Field | 14. Yorktown |
| 5. Worcester | 10. Imphal | |

The Midland Sinfonia

St. Laurence Church, Alvechurch, B48 7SB

Saturday 7th December 2019

7.30pm - doors/bar open 7pm

'Bold as Brass'

Medleys of Christmas music and traditional Carols, Jazz standards and Classical Favourites including Vivaldi's 'Winter' and Saint-Saens' 'Serenade d'Hiver'

Tickets £13. (In advance £12: www.midlandsinfonia.co.uk
or 'Gin & Pickles', The Square Alvechurch). Accompanied children & students FREE



*'Appreciate the difference of
a family owned company,
serving the community for 100 years'*

James Giles 
and Sons Ltd Est.1916

The Complete Funeral Directors


Golden
Charter
Funeral Plans

01527 872318
jamesgilesandsonsltd.co.uk



24 Stourbridge Road, Bromsgrove, Worcestershire B61 0AE

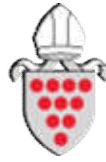
Bentley Pauncefoot WI

At a recent meeting, members learned the bad news that the risk of falls increases as we age. However, the good news is that there are lots of strategies that we can adopt to minimise mishaps. The speaker, Angela Hugman, gave us useful, practical tips to prevent falls.

1. Vision is vital so have regular eye tests to make sure your glasses have the right strength and keep them clean.
2. Wear sensible, well -fitting shoes and don't wear slippers all day as they don't support the back and balance as well. High heels are fine if you feel safe in them.
3. Make sure that lighting is adequate; especially at the top and bottom of stairs.
4. Loose rugs are dangerous as are frayed carpets especially in doorways. Beware of trailing wires and inaccessible plugs as falls can occur when leaning over things to get at them.
5. Small animals and children can cause accidents. Obviously, no one wants to ban them (?), but it is as well to be aware of where they are to avoid tripping over them.
6. Don't stand on chairs to reach into high cupboards etc. Use a stepladder and have someone steadying the ladder.
7. Apparently, a large number of people fall on the stairs. Therefore, take your time when going up stairs and keep them clear. Use the handrail if there is one. Do not be too proud to use aids such as grab rails, doorsteps and pendant alarms if you need them.
8. Be aware of floor surfaces. Negotiating the change of surface, for example from wood to carpet, can be difficult if wearing varifocals. Wet surfaces can cause slips. In older buildings be aware of the change of levels.
9. Keep active as much as possible and don't sit for too long.
10. A balanced diet and eating regularly are vital. For example, food high in vitamin D and calcium is important for maintaining a healthy spine, hips and wrists. A poor diet can lead to dizziness. Alcohol is fine in moderation. Too much is an appetite suppressant and affects bone turnover. Too much and you may fall over(!)

Now all this may seem like common sense. It is. However, when did we all use our common sense, the author of this piece has fallen victim (horrible pun intended) to mishaps that could have been avoided, by paying heed to at least 3 of these points, but she is not telling you which ones.

Lynne Reading
(01527 559 207).



THE CHURCH
OF ENGLAND
DIOCESE OF
WORCESTER

A Letter from the Bishop of Worcester

Together with the Roman Catholic Archbishop of Birmingham, Bernard Longley, I recently led an ecumenical pilgrimage to Rome, accompanied by 20 Anglican and 20 Roman Catholic pilgrims.

One of the highlights was a general audience of the Pope in St Peter's Square. There were many thousands of people at that audience, as there are every Wednesday morning, but we were very fortunate to be singled out and warmly greeted by the Pope who asked us for our prayers for him. 'Don't forget!' he added.

At the heart of such audiences is a simple Bible study, given by the Pope in Italian and translated into a number of languages. On this occasion he reflected on the occasion recounted in Acts 8 when the apostle Philip met the Ethiopian who was reading a passage from the prophet Isaiah. As he said:

'Yet, without a guide, he is unable to understand its full meaning. Philip explains to him how the Old Testament prophecies reach their fulfilment in Christ. As a result, the Ethiopian professes his faith in Jesus, and asks to be baptised. From the baptismal waters he emerges no longer a stranger, but a member of the Body of Christ. The dialogue in this encounter reveals to us the key to reading the Scriptures: namely, Christ. Let us pray that the Holy Spirit will strengthen all the baptised to follow the example of Philip in bearing witness to the saving power of the Gospel and bringing others to Jesus.'

May we remember that the key to understanding the scriptures is Jesus and bring others to him by witness to the saving power of the Gospel recorded in them.

+John

The Real Advent Calendar

The Real Advent Calendar is the UK's only Fairtrade Advent Calendar which comes with a 24 page Christmas Story activity book.



To order yours (£3.99) please contact *Jane Hall* (07980 358252 or 01527 598342)

Traidcraft Christmas Cards

Available to purchase or order from **Jane Hall (07980 358252)**



Proceeds to charity.

**WE NEED
YOUR HELP!**

Christingle Making Workshop

Join us to make the Christingles for our Christmas Eve service

Who?

All ages welcome

Where?

Tardebigge Church Hall

When?

Monday 23 December
10 am til 12 pm

Further information

To find out more please contact Helen on 07920 514903
Find us on Instagram: @tardebiggechristingle

IMPORTANT NOTICE

Free hot drinks &
mince pies, plus
squash & biscuits for
our younger helpers!



Verse for the Month

Never be lacking in zeal,
but keep your spiritual fervour, serving the Lord

Romans 12: 11

Sidespersons Rota

3rd November

11.00am - P Hopkins and V Richardson

6.00pm - P Hopkins

10th November

8.00am - D Hall

11.00am - D Stubbings and E Price

6.00pm - M Price

17th November

11.00am - L Parkes and J Oldaker

6.00pm - P Hopkins

24th November

8.00am - G R Underhill

11.00am - V Mackenzie and P Hopkins

6.00pm - T Powell

Flower Rota



3rd November

Maureen Hudson

10th November

Remembrance

17th November

Noreen Hall

24th November

Vivien Mackenzie

1st December

Advent (no flowers)



16th November

Sarah & Joseph Underhill

Weddings



4th October

Adam Paul GAILEY &
Sarah Louise MILLS

Baptisms



12th October

Max George LEFEVRE

27th October

Joseph Stephen WATSON

**Registers in
October**

**St. Mary's Church,
High Elms Lane,
Lower Bentley,
B60 4JA**



St. Mary's is a countryside church surrounded by open fields. It is ideal for small intimate baptisms and weddings, accommodating up to fifty guests.

**For enquiries please contact
Jane Hall (07980 358252)**

Email: contact@tardebiggechurch.org.uk

Webheath Digital Photography Club

On 16 September we welcomed back John Haines to judge our second prints competition of the year. He warned us against taking all the comments from judges too seriously but hoped that we would see that advice was well meant. He lightened the evening with some of his observations, at the same time offering suggestions on how some images might be improved. He noted that the quality of the fifty images was extremely high, a fact reflected in the number he held back for later review before scoring them. Having awarded the 16s he turned to the 17s and 18s (four prints in each). He was then stuck with the last two.



Eventually he awarded 20 to Graham Bastock's "Eyes on you" over "Salt pans". A highly enjoyable evening with many good submissions from our newer Members.

A good number of members of Stourbridge Photographic Society were our guests the following week for our annual contest with Ken Hutchison the judge. He was generous in his praise, criticism and helpful comments. Some excellent images were projected, confirmed when as many as twenty nine of the fifty entries were held back for rescrutiny. Even so five images were awarded twenty points. Sadly too many high scorers were from the Stourbridge entries who took honours for the evening by 440 points to 412.

Peter Preece and his wife made a welcome return on 30 September with his talk "Hide and Seek". He described the process of deciding on a project, organising it and then sitting with time and patience to capture his very fine images. Interestingly he seemed to gently scorn judges and their comments and was not too keen to enter his images in competitions, although he did show some of his winners. His birds from his favourite haunts in England, Scotland and northern Spain were something we can only dream of. Lately he has turned to macro photography with similar stunning results for butterflies and fungi. He closed the evening with some of his "creative" images.



The first Monday of October was a technical evening. We started with Richard Freail outlining how to make an AudioVisual presentation ready for an evening in November's programme. Whatever the software used a simple but acceptable AV can be made with the minimum of effort. After coffee break we

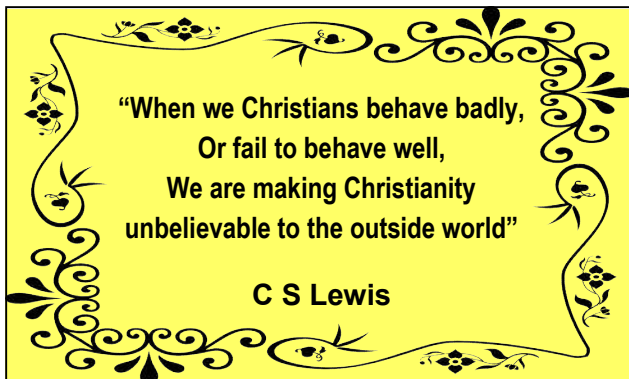
broke up to try to capture the technical tasks set by some club members. Reflections of flowers on black Perspex and shots through oil-on-water seemed to be popular subjects, with close-up or macro shots close behind. The important topic of "The Exposure Triangle" (ISO, shutter speed and lens aperture) got an airing in one corner.

November meetings start on the 4th with a talk by Andy Beele. The next week we have a photography-based quiz when members form into teams to demonstrate their collective ignorance! A night showing our latest AudioVisual creations is scheduled for 18 November and the month finishes with an Assignment night, the theme being "The Seasons", appropriate as we near the close of the year.

The Village Hall, Webheath, is our usual venue on Monday evenings at 7:30, except Bank Holidays and through Christmas and the New Year. Anyone with an interest in digital photography is very welcome to come along to our regular meetings. The Club's website is webheathdpc.com where you can find details, such as our programme and how to contact us. You can also find us on Facebook as Webheath Digital Photography Club and at www.instagram.com/WebheathDPC.

P. Dewell November 2019

* * * * *



Sudoku

	3	8		6				
	2				8			9
7	1		3	9	4	6		
	6		8					
5								7
					2		1	
		9	4	2	1		5	3
2			6				4	
				3		7	6	

Solution next month

8	5	3	9	1	6	4	2	7
7	9	1	2	4	3	5	6	8
2	6	4	5	8	7	9	3	1
5	1	8	4	6	9	3	7	2
9	7	2	8	3	1	6	5	4
4	3	6	7	5	2	8	1	9
3	2	7	6	9	4	1	8	5
1	8	9	3	2	5	7	4	6
6	4	5	1	7	8	2	9	3

Last month's solution

Word Search

"Do not let any unwholesome talk come out of your mouths, but only what is helpful for building others up according to their needs, that it may benefit those who listen"

Ephesians 4: 29



TALK MOUTHS HELPFUL
BUILDING UNWHOLESOME NEEDS
BENEFIT LISTEN OTHERS

Words to be found may be forward, backward, vertical or diagonal within the puzzle

J.E.H.

Huntleys Funeral Services

A life well remembered lives on.



A funeral is a time to say goodbye and to remember the life of a person you love. It's our privilege to be at your side.

You can talk to us any time, day or night or for further information visit us at

huntleysfunerals.co.uk

58 Ipsley Street,
Smallwood
Redditch B98 7AE
01527 62106

funeralpartners.co.uk



Funeral Partners



WHERE
NEXT

Garden Centre

Opening hours
Mon-Fri 9 to 5, Sat 10 to 4

Woodwork
Packing / assembly
Landscaping / maintenance

Support your local charity which offers people with special needs the opportunity to experience the real world of work

Wellesbourne Close,
Easemore Road, Redditch B98 8ER
(01527 69955)



A. Pullen

• MEMORIALS •

*Additional Inscriptions &
Renovations*

*All work is to the highest standard
and carried out at our workshop*

Showroom and Workshop

338 Alcester Road, Burcot

Bromsgrove B60 1BH

Tel: (01527) 876200

Email: apullenmemorials@hotmail.co.uk



BRITISH REGISTER OF ACCREDITED
MEMORIAL MASON



Tardebigge Court

A unique retail and business park
of specialist shops, trades and services

- ~ fitted furniture, upholstery, haberdashery
- ~ fireplaces and stoves
- ~ cake decorating classes
- ~ wedding dresses, shoes, flowers and stationery
- ~ designer and prescription eyewear
- ~ memorial and keepsake jewellery
- ~ hair and beauty salon, and gents barbers
- ~ sports injury physiotherapy and massage
- ~ sports clothing and equipment
- ~ musical instruments and tuition
- ~ canine massage therapy
- ~ studio portrait photography
- ~ motor and building services
- ~ Alestones real ale micropub
- ~ and the New Tardebigge Court Café

Plenty of free parking

Visit www.tardebiggecourt.co.uk | Phone 07768 364052

Tardebigge Court, Hewell Lane, Tardebigge, Worcs B97 6QW



St. Bartholomew's,
Church Lane,
Tardebigge, B60 3AH

Directory

St. Mary's,
High Elms Lane,
Lower Bentley, B60 4JA

Church Wardens

Chris Milton, 86 Finstall Road, Bromsgrove, B60 3BX
(01527 871132 & 07825 749767) cmilton@btinternet.com

Jane Hall, 73 Appletree Lane, Redditch, B97 6TD
(07980 358252) janeehall73@gmail.com

Treasurer	Please refer to Chris Milton cmilton@btinternet.com	07825 749767 01527 871132
PCC Secretary	Vivien Mackenzie	07727 293664
Parish Clerk & Electoral Roll Officer	Jane Hall janeehall73@gmail.com	07980 358252
Choir Master	Robert Barnett	01527 542491
Organist	Dudley Fowkes	01527 545211
Safeguarding Officer	Sarah Carless sarah@doff.org.uk	07789 174099
Central Communications (Magazine & Enquiries)	c/o Jane Hall contact@tardebiggechurch.org.uk	07980 358252
Pastoral Care	Gail Teague (co-ordinator) gail.teague@icloud.com	01527 541991
Envl. Scheme & Gift Aid	Lucy Parkes	01527 871132
Magazine Distribution	Jane & Sally Oldaker	0121 445 1844
Sidesman's Secretary	Pat Hopkins	01527 67099
Sexton	Michael Price	01527 544152
St. Mary's Church, Lower Bentley	Sarah Carless Marion Wormington	01527 821514 01527 880666
Tardebigge First School	Headteacher: Julie Cutler	01527 872886
Church Hall Bookings	Angela Rigby	01527 872174
Community Hall	Lynn Denyer	07763 446902
Bentley Village Hall	June Brazier	01527 403950

Clergy Team

Incumbent/Team Rector: Rev. Richard Clark

The Vicarage, Webheath, Redditch B97 5PD

(01527 543967 & 07970 8234620 trhtredditch@gmail.com)

Rev. Paul Irving (Team Vicar, St. Leonard's, Beoley & Education) (01527 435683)

Rev. Paul Lawlor (01527 62375)

(Rural Dean, Team Vicar, St. Stephen's & Town Centre Chaplain)

An Independent Family Owned Funeral Directors



THOMAS BROTHERS

*The only family owned funeral homes in Redditch, Wythall & Alvechurch.
We provide a friendly, dignified service paying special attention to detail.*



REDDITCH OFFICE - Telephone: 01527 547 777
494 Evesham Road, Redditch, Worcestershire, B97 5JF



ALVECHURCH OFFICE - Telephone: 0121 445 3422
12A Red Lion Street, Alvechurch, Worcestershire, B48 7LF

WYTHALL OFFICE - Telephone: 01564 822 001
100 Alcester Road, Wythall, Birmingham, West Midlands, B47 5HA

www.thomasbrothers.co.uk
Email: admin@thomasbrothers.co.uk

"A family concern"

JONATHAN SPROULE DEVELOPMENTS LLP

(Master Builders)



SPECIALISTS IN INDIVIDUAL CHARACTER,
TIMBER FRAME & PERIOD PROPERTIES

20 Years Experience

HOUSE EXTENSIONS. RENOVATIONS
CONVERSIONS & ALTERATIONS
BARN CONVERSIONS
TIMBER / OAK FRAMED GARAGES



07973 445048 & 07976 826065

FAX: 01527 821452



Registered charity no. 1012868

www.cherishfund.org.uk

The Cherish Fund is a UK based charity which has the provision of education for African children and young people as its primary objective.

The charity is also helping to support a clinic in Uganda; many of the patients are disabled children from local villages.

Your support would be very much appreciated!



RCA SERVICES

ESTABLISHED 38 YEARS

Safe
MEMBER
39946

HEATING ELECTRIC PLUMBING

GAS • OIL • LPG



All Makes of Boiler Serviced & Repaired
Aga & Rayburn Range Cookers
Domestic Heating & Plumbing
Radiator & POWERFLUSH Cleaning
Fuseboards • Sockets • Lighting
Gledhill Storage Systems

All Work Guaranteed • Fully Insured

Tel: 01527 834953
or 07976 270240

www.rcaservices.co.uk

Approved Contractor

WORCESTER
BOUCH GROUP

Gledhill
BIRMINGHAM 2000



Tutnall Hall is an 18th century Georgian house with fabulous landscape gardens and views over Worcestershire, and is home to 35 residents.

Tutnall Hall

Spring View Care

A high quality local nursing home

At Tutnall Hall, we provide small homely environments where our residents are at the heart of everything we do. It is our aspiration to provide nursing homes where we ourselves would be happy to stay.



Spring View Care is proud to announce that Tutnall Hall was listed as one of the top 20 care homes in the West Midlands in 2015



Tutnall Hall: Tutnall Lane, Tutnall, Bromsgrove B60 1NA **Tel: 01527 875 854**
Website: www.springviewcare.co.uk Email: mercy@springviewcare.co.uk