

www.tardebiggechurch.org.uk ✉ Email: contact@tardebiggechurch.org.uk ✉ "A June sunset - view from Tardebigge Church" Photo by Jane Hall

Tardebigge and Bentley Parish Magazine



July & August 2018 - £1



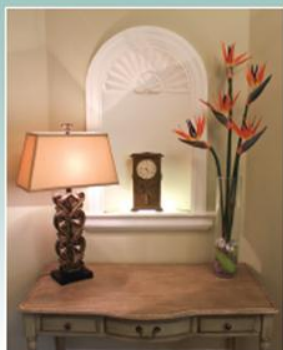
Grosvenor House is a detached Victorian property, nestled between the peaceful villages of Alvechurch and Barnt Green, and is home to 25 residents.

Grosvenor House

Spring View Care

A high quality local nursing home

At Grosvenor House, we provide small homely environments where our residents are at the heart of everything we do. It is our aspiration to provide nursing homes where we ourselves would be happy to stay.



Spring View Care is proud to announce that Grosvenor House has been listed as one of the top 20 care homes in the West Midlands in 2015 and 2016



Grosvenor House: Aqueduct Lane, Coopers Hill, Alvechurch B48 7BS **Tel: 0121 447 7878**
Website: www.springviewcare.co.uk Email: mercy@springviewcare.co.uk

July & August



From Richard, the Team Rector

At Tardebigge we are always looking for ways to improve our provision for children and, ideally young people as well. There is a family-friendly service every week; we do our best to work closely with Tardebigge School, having a strong representation on the governing body, including a role in keeping an eye on the quality of RE teaching, and in addition to our weekly “Open the Book” Assemblies and our termly CREW, in July all leavers will be presented with a Youth Bible.

What does the Bible have to say about children?

Children are very important to Jesus, and His Church. **Jesus loves to bless children.**

“Then people brought little children to Jesus for him to place his hands on them and pray for them. But the disciples rebuked them. Jesus said,

‘Let the little children come to me, and do not hinder them, for the kingdom of heaven belongs to such as these.’

When he had placed his hands on them, he went on from there.” Matthew 19:13-15.

Jesus delights to hear the prayers and praise of children. In many places in the world children are encouraged to pray from an early age. The prayers and praises of children, according to the bible, have real spiritual power, for example in Psalm 8:1-2

“Lord, our Lord, how majestic is Your name in all the earth!

You have set Your glory in the heavens. Through the praise of children and infants

You have established a stronghold against your enemies, to silence the foe and the avenger”.

God just loves it when children sing Christian songs suitable for their age group and not just nursery rhymes or pop or rock tracks.

Jesus can reveal deep spiritual truths to children, he does not wait until they become grown ups: “At that time Jesus said, ‘I praise you, Father, Lord of heaven and earth, because you have hidden these things from the wise and learned and revealed them to little children.’ Matthew 11:25.

Jesus also sees the work of the Church in caring for the spiritual needs of children and young people as very important:

“Whoever welcomes one of these little children in my name welcomes me; and whoever welcomes me does not welcome me but the one who sent me.” Mark 9:37

“If anyone causes one of these little ones – those who believe in me – to stumble, it would be better for them to have a large millstone hung round their neck and to be drowned in the depths of the sea”. Matthew 18:6

Parents (and godparents) who bring their children to be baptised (christened) need to remember that they committed themselves in that service, in the presence of Almighty God, to bring up their children to public worship as well as private prayer, and also to set a Christian example in their home life, and to teach them about the Christian faith. St Bartholomew's and St Marys' are willing to do all we can to assist in that task, but parents, godparents and grandparents can also check out the resources at the Word Christian Bookshop which is located just inside St Stephen's church building in the centre of Redditch.



Any woman carrying an unborn child can come to a Holy Communion service and that child will be blessed at the altar rail when people come up to receive the bread and the wine or to receive a blessing. A child can sense the presence of God, Father, Son and Holy Spirit, before they are born.

You can also check out Pips, the monthly service for three to seven year olds at Webheath Church, on the second Thursday at 3.45pm (except in August); and then there's Messy Church, which is great fun for children, and takes place 6 times a year at the Emmanuel Ecumenical Centre on Evesham Walk, Redditch, just by the entrance to the Kingfisher Shopping Centre, opposite Caffé Nero.

Above all, it is important that a child has the opportunity in their home, and when visiting grandparents, to find out more about Jesus and to develop their own personal faith. Jesus is available to every child, every day, and longs for every child to commit to be his friend.

Richard



The Produce Show

Saturday 8th September 2018 - to be held in Church

Schedules and entry forms are now available in the church and at various garden centres. Or you can request an electronic copy from Nick Reading nick@readingdesigns.co.uk

Please come along with your flowers, fruit, vegetables, wines, jams, cakes and pastries



There is a junior section and photography too.



Tardebigge Show

**Saturday
8 September**

Opens 1.30pm

**Fruit, Vegetable
& Flower Show**

Auction of products

Admission FREE

*Fun for all
the family*

Variety of Stalls
White Elephant,
Plants, Cakes,
Books, Tombola,
Prize Draw
and more...

St. Bartholomew's Church, Tardebigge, B60 3AH
www.tardebiggechurch.org.uk

Wardens' World

July 2018

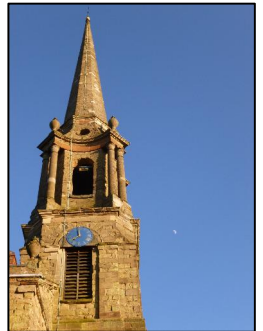


Trinity...that great summer season of the church, when the altar cloth stays green for almost half a year and there's one less job for a warden to do. And also the time, particularly this year, when sunny weather brings people flocking to Tardebigge to take in the glorious views and beautiful environment of our churches, whether churchgoing, cycling, walking or running, our car park is rarely empty!

People also flock to Tardebigge at this time of year for music, and again we have had the support of the Bromsgrove Festival to put on three special concerts and services in St. Bartholomew's. This year started with the sixth of our Informal Concerts organised by Dudley Fowkes and Sue Atkinson, an amazing display of local talent which was thoroughly enjoyed by almost 70 people. With music ranging from the 16th century to the Star Wars theme, some good (and some extraordinary) performances by the school choir, church members and solo artists from the community, it made for a great evening amidst perfect weather, raising over £200 to help maintain our organ. We are very grateful indeed to Sue, Dudley and all the performers.

The Clent Consort followed with an unusual Sunday evening Compline service, taking us back to the ways of earlier churches, monastic plainchant and the comfort of God as the night draws on. At the time of writing, we also eagerly await the Oakville Singers' double bill of secular concert and choral evensong to round off this year's concert season!

Not only are visitor numbers up; it is also great to report that more and more people are volunteering to help organise the church – notably Steve Lewis stepping up (and immediately getting to work!) as property manager, and Stacey Roe and Sam McDonald offering to help with the finances. There is also a dedicated team working to develop the new Tardebigge Show on September 8th, about which you can read elsewhere in this magazine. Do check the details and volunteer to help grow the band of helpers. At the moment, we have a real sense of our church community growing and the buildings being used more and more!



Chris and Dean

Services at Tardebigge and Lower Bentley

Sunday 1st July (Trinity 5)

9.30am **Café Church** in the *Church Hall*
(breakfasts from 9.00am)

11.00am Traditional Morning Prayer
6pm Compline with The Clent Consort

Sunday 8th July (Trinity 6)

8.00am Holy Communion

9.30am **Family Service** at *St. Mary's*

11.00am **Family Service**

6.00pm Evensong

Sunday 15th July (Trinity 7)

11.00am Holy Communion and **Sunday Funday**

6.00pm Choral Evensong with The Oakville Singers
(preceded by a concert at 4.45pm; sacred and choral works)

Sunday 22nd July (Trinity 8)

8.00am Holy Communion

9.30am **Worship For ALL**

11.00am Traditional Holy Communion

6.00pm Evensong

Sunday 29th July (Trinity 9)

9.30am **Worship For ALL**

11.00am Traditional Holy Communion

6.00pm 'Songs of Praise' at *St. Mary's*

Sunday 5th August (Trinity 10)

11.00am Traditional Morning Prayer

6.00pm Traditional Holy Communion

Sunday 12th August (Trinity 11)

8.00am Holy Communion

9.30am Holy Communion at *St. Mary's*

11.00am **Family Service**

Sunday 19th August (Trinity 12)

11.00am Holy Communion

6.00pm Evensong

Sunday 26th August (Trinity 13)

8.00am Holy Communion

9.30am **Worship For ALL**

11.00am Traditional Holy Communion



Bumps, Babes and Toddlers

at St. Philip's Church, Webheath



Thursday mornings 9.30am-11.30am

Suggested donation £2 per family
Includes tea, coffee and biscuits.



St Philips Bumps Babes and Toddlers

Like Us On Facebook

St. Philip's, Church Road, Webheath, B97 5PD
www.stphilipswebheath.org.uk
Contact Rev. Richard Clark (07970 823462) email: trhredditch@gmail.com

Café Church – 1st Sunday of the month
In the Church Hall

Tardebigge Café Church, St Bartholomew's church hall B60 3AH

OPEN
1st Sunday 9.30am
Café open from 9am

www.tardebiggechurch.org.uk contact@tardebiggechurch.org.uk

Family Friendly Worship in a Café Style
Breakfast is served from 9am
Worship from 9.30am
There is **no charge** for refreshments.

Annual Magazine subscriptions

£10 collected or hand delivered; £16 by post.
Payments can be made pay by cheque, cash or via BACS
(quoting MAGA as the reference please)
(Account no: 70799599 Sort Code 40-38-07)

For enquiries contact Dean or Jane Hall
(contact details inside back cover)

*Thank you for supporting
St. Bartholomew's and St. Mary's Churches*

September Magazine

Please send your articles and items to our central email address:
contact@tardebiggechurch.org.uk by MONDAY 13th August

Moving Forward on Mission in the Parish of Tardebigge

WOW what fantastic times we are enjoying in our church, more people are coming to faith, our churches are almost always full for services, church activities are supported in increasing numbers, and our role in the community has increased ten-fold.

Alas, perhaps the precise opposite is true, but just imagine for a few moments that we had been this successful. What would Jesus say? Perhaps the following “The greatest challenge I set for you all was to become disciples and build my church, and in this you have done well my good and faithful servants.”

Note that the challenge of Jesus was to every one of us, not just the clergy, but to every believer, that includes probably every single person reading this article.

Like the majority of churches ours has been in decline for many years and for many reasons. And so from here on in maybe the only way is up, which, if every believer gets involved in some way should be really exciting times, because I do believe we can meet the challenge Jesus set for us, and make that opening paragraph come true.

This brings us directly to Mission which surely in simple terms means “bringing people to faith” and therefore it is Mission that should be the greatest focus for all church members, it must be at the very core of our culture. Much more time effort and money must be directed to how we can rise to the challenge. At this point just read the opening paragraph again, doesn't it make you feel good? Together we can achieve something close to it but it will take a little time.

The time is now however to make positive and even sweeping changes. Changes in :-

- How we create more awareness.
- How we help people to come to faith.
- How we increase our appeal in worship.
- How we create a better church community and attract people into it.

Our actions and commitment to how we all do these things will change the direction and breathe fresh life into our church. Two “open” meetings have already been held in a bid to start things moving, but these were attended by only nine people at one or both meetings. Unless everyone gets involved in some way we will not meet the challenge, and if we fail, then I see our church going into deeper decline.

If you are thinking we've heard all this before, you would be right, which proves that in the past we have either not done enough or what we have done has not been successful. So this time we must all make Mission our focus which means everyone being committed and getting involved in any way possible.

To find out more about the part you can play however big or small that might be, please attend the next Mission meeting, or at least speak to anyone who previously attended. If need be ring me on 07971 888776 and I can try and help you.

Roger Powell

The Spring Greens

The Spring Greens is our ladies' group for women of all ages with a young outlook. We usually meet in the Church Hall on the third Thursday of the month at 7.45pm. For more details please contact Jane Hall (07980 358252); or Email janeehall73@gmail.com



New members always welcome!

Jane Hall

Over £9,000 raised by Bishop's Lent appeal



The appeal launched as part of Bishop John's Lent message to mark 10 years since his enthronement as Bishop of Worcester has raised £9403.84 for Berega Hospital.

Bishop John said: "Berega Hospital ministers to the poor and it is in crisis because of lack of funding. This magnificent sum will go a very long way on those circumstances. I am immensely grateful to all those who have responded so generously to this appeal."

Chair of the Morogoro Task Group, Canon John Green said: "What a wonderful result for Berega Hospital. Thanks to everyone that has made this possible. Your money will be a real lifeline for a hospital that lives on a shoestring with insufficient resources to provide even basic care and medicines. The Hospital Director, Canon Isaac Mgego does a wonderful job in managing this amazing church hospital which continues to offer care to so many who have so little and I can imagine his joy and happiness when he receives this splendid gift from the people and parishes of the Diocese of Worcester."





Spring Greens

June 21st; a lovely midsummer evening, we enjoyed planting containers with plants from 'Where Next'. Lucy kindly agreed to co-ordinate this session, and after our creating our pots we sat and chatted over tea and cake..... what more could a girl ask for?



August 1976

Vicar: Rev. D J Copley, M.A.

PCC Secretary: Mr H G Kidwell

Reader: Mr Peter Frowley

PCC Treasurer: Mr E V Sadler

Church Wardens: Mr J D H Hedley & Mr F H Gateley

Magazine Treasurer: Mrs J R Hutchings

Organist: Mrs M Goulbourne

*

*

*

The following letter came from Harry Hughes to say thank you for the gift of £25 which we sent to him in recognition of his more than sixty years in the choir:

Pembroke Dock,
Dyfed.

Dear Vicar, Choristers and members of Tardebigge and Webheath Churches,

Thank you Vicar for your letter and magazine and the very nice tribute you wrote about me. My small contribution over the years has given me great joy and pleasure and if it has contributed in any way to forward the work of the Church then that surely is reward in itself.

I find it most difficult to put into words my feelings for the very kind response made to me by choristers and members of Tardebigge and Webheath Churches; will you please convey to all concerned my sincere thanks to them for the lovely present.

Although we have come to live in a very beautiful county with its many delightful coastal walks and nature trails, I still have an ache in my heart for both Tardebigge and Webheath which will always be home to me. We find the people here very friendly and helpful, and our days out taking picnics and walks are most enjoyable.

I hope you and Mrs Copley and the family are keeping well. Will you please give our good wishes to all at Tardebigge and if you are ever this way we shall be very pleased to see you, or any of our old friends.

Sincere regards from us all,
Sincerely,

Harry Hughes

*

*

*

1,000 Years in Tardebigge - Mrs Westwood of Webheath, asked me to put a note in the magazine hoping somebody might see it to whom she lent her copy of Miss Dickin's book. If anybody sees this note and has got Mrs Westwood's '1,000 years in Tardebigge' she would be very grateful to receive it back again, as Mrs Westwood has forgotten to whom she lent it.

David Copley

The Evergreens

Evergreens is a group that meets in the afternoon several times a year and is open to all people, though it tends to be those who are retired who come along.

If you need further information please ring either
Vivien Mackenzie (0121 445 1245) or Mary Watkins (0121 445 3075).

Afternoon Tea for Evergreens

Monday 23rd July

We are keeping the tradition, begun by Alan, of having Afternoon Tea at a local garden centre in July, rather than meeting in the Church Hall. Having enjoyed our afternoon at Little Heath Garden Centre last year, we have arranged to have tea there again.

Date: Monday 23rd July (NOT the 16th)

Venue: Little Heath Garden Centre, Little Heath Lane, Lickey End,

Bromsgrove B60 1HY

Time: 2.45pm for 3.00pm

Cost: £7.50 per person

A minimum of 10 people is required for the visit to go ahead and Mary will need to confirm the numbers by Thursday 19th July.

We hope you will be able to come along and please let us know if you would like a lift. You don't have to be a regular attender at Evergreens to join us!

To book your place, or for further information, please ring Vivien (0121 445 1245) or Mary (0121 445 3075).

We look are looking forward to seeing you there!

Celestial Corner

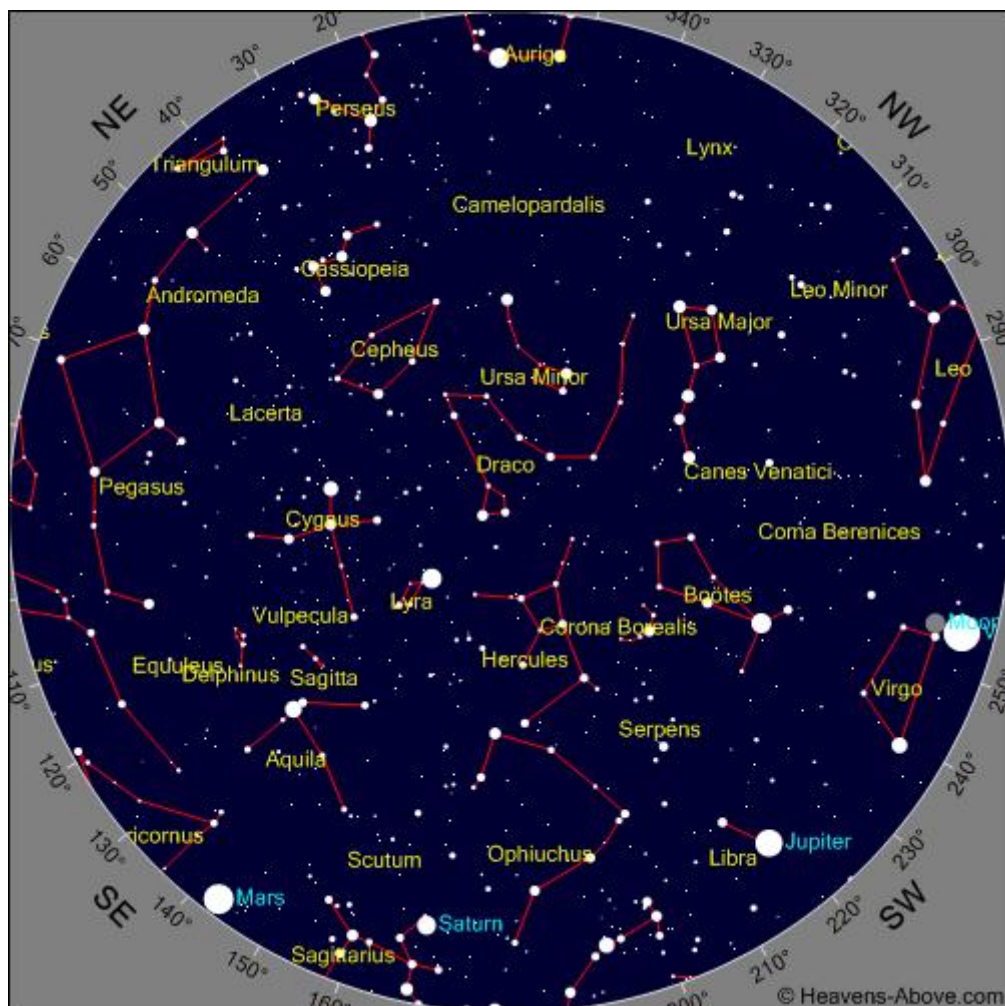
As stated in last months article, this being a two month edition of the magazine and the fact that the July evening sky is still fairly light, I am going to talk about August, when, after the middle of the month, the sky is dark before 11pm!

The map is for 10pm on August 14th. In the west is the moon with Venus close by. Moving eastwards we come to Jupiter, in the south west, in Libra (the Scales). Move further east, past Scorpio, into Sagittarius and we find Saturn with its rings low in the south and low in the south east, just rising, is the red planet, Mars. If you can get away from lights and get to a place where you can see Mars and Scorpio it is a good time to compare the colour of Mars and Antaries, the chief star of Scorpio and known as the “rival of Mars”. Scorpio is the group of stars below Orphiucus and Antaries is the star between two fainter ones and the brightest star between Jupiter and Saturn.

Another reason to get away from lights for an hour is that the Milky Way is possibly at its best due to the fact that, when looking south, you are looking toward the centre of our galaxy! In this area, the density of the Milky Way is at its greatest and embedded in it are star clusters and nebulae, a few of which are visible with 10x50 binoculars, such as M8 the “Lagoon nebular”, M16 the “Eagle nebular”, including an open cluster, M20 the “Trifid nebular” and M17 the “Omega nebular”. Low in the north is Auriga with its chief star, Capella. The Milky Way runs from Auriga, through Cassiopeia and Cygnus, down through Scutum,(the shield), into Sagittarius. 10x50s will show just how rich the area around Scutum and Sagittarius is for stars and those “fuzzy patches”, although we don’t see it at its very best from the UK as the area is so low in the south. Going back to Capella, in the winter it will be seen to have virtually swapped places with Vega in Lyra (the lyre) and will be almost over head. Auriga contains three star clusters visible with 10x50s, M36, M37 and M38.

So, what are these clusters and nebulae I keep on about? That, my friends, is for next month. In the mean time, try and keep an eye on Jupiter and Mars and see if you can see how far they move against the starry background.

R. B.



The Midland Sinfonia
 Friday 6 July 7.30pm
 St Laurence Church, Alvechurch
 Season's Finale



Guest: Tim Gill principal cellist of the RPO

Boccherini - Symphony No. 17 in A; **Haydn** - Cello Concerto No. 1 in C
Strauss - Sextet from Capriccio; **Mozart** - Symphony No. 29

Tickets: on the door £14.50, in advance £13 from 'Gin & Pickles', The Square,
 Alvechurch or online at www.midlandsinfonia.co.uk
 FT students and schoolchildren accompanying an adult free.

For more information: midlandsinfonia@gmail.com or 0121 447 7040

News from School



The end of term is fast approaching and at the time of writing, the weather is warm and sunny and we hope it stays dry for our Activity week and Sports day. Activity week involves the children taking part in a variety of sports and healthy activities such as hoola hooping and rugby. Sports day is a full day, with team games in the morning and traditional races in the afternoon; we are looking forward to it!

Recently, Mrs Cutler received a letter from Oscar, one of our pupils, appealing for chocolate to be allowed in school occasionally at break time: *“Chocolate can make you happy, it can give you an energy boost when you are tired at the end of the week and it can be used as encouragement for children to behave well during the week. Everyone loves chocolate and it would make the school a happier place to be”*. As the result of Oscar’s letter, it has been agreed that children can bring a fun size piece of chocolate on the last Friday of each half term as a treat.

End of term involves children preparing and looking forward to moving into a new academic year, and there are transition days for the children to spend time with their new teacher in their new classroom including those who will be starting school and our pupils who will be moving to middle schools. Some children find this exciting, and others daunting, so it is a good opportunity for them to get used to their new surroundings and look forward to September.

Jane Hall

Contact details:

Telephone: 01527 872886

Email: office@tardebigge.worcs.sch.uk

Website: www.tardebigge.worcs.sch.uk

Head Teacher: Julie Cutler



WANTED – NEW GOVERNORS

Tardebigge CE First School



Do you want to make a positive contribution to the education of pupils at our school?

Would like to join one of the largest volunteer groups in the country?

We are recruiting for new governors and would be delighted to hear from anyone who can offer the following:

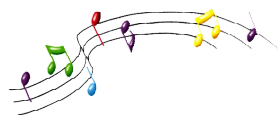
- An enthusiasm to improving children's education, attainment and progress
- The confidence to ask challenging questions
- The ability to work well as part of a team
- Transferable skills and knowledge to complement the governing body
- Time to invest in being an active governor

If you would like to find out more about becoming a Governor, please download the recruitment pack from our website at www.tardebigge.worcs.sch.uk or email janehall73@gmail.com

To apply please complete an application form (available in the recruitment pack) by Friday 18 May 2018. Informal interviews will take place in June 2018.

Songs of Praise

Sunday July 29th
St Mary's Bentley at 6.00pm



We always pretty well filled the church of St Mary's Bentley for this Songs of Praise service and the atmosphere of singing in a full church on a summers evening, does it get any better? Please let me have hymn requests as soon as possible by completing the details below, and I hope you can join us.

Hymn Request

First line of hymn:

Why requested: (if you would like to tell us)

Name:

Contact telephone number:

Please return to:

Roger Powell, 24 Wheelers Lane Brockhill, Redditch B97 6GT

Tel: 07971 888776

Email: rmpowell@btinternet.com

Verse for the Month

And the things you have heard me say
in the presence of many witnesses
entrust to reliable people
who will also be qualified to teach others.

2 Timothy 2: 2

The Archdeacon's Charge

Each year there is a special service to formally admit the church wardens to the role in the form of a 'charge' to the wardens.

The service this year for the Archdeacon of Dudley's Charge was held on Wednesday 8th June 6th in Bromsgrove. The Venerable Nikki Groarke, Archdeacon of Dudley, gave the address based on Romans 8: 1-11. The charge can be read or heard via

<http://www.cofe-worcester.org.uk/news/2018/06/11/archdeacon-dudleys-charge-2018/>.



The Church Wardens in the team ministry of Redditch, Holy Trinity, pictured after the service at St. John the Baptist Church, Bromsgrove

The White Butterfly

**All summer long amongst the vegetables and flowers
I had watched it gently alight,
The butterfly graceful, ethereal and pure
Bestowing a blessing, it seemed, in its flight.**

**Some folk, the wise ones, believe we are never alone,
The spirit of loved ones exist
In feathers that drift in the soft, gentle breeze,
In the white butterfly that touches my wrist.**

**When in need of comfort and solace how good it must be
To have a faith to which we can cling,
To believe those who loved us can show they still care
In the soft touch of a white butterfly's wing.**

L M Wadlow



The Oakville Singers at Tardebigge Church

Sunday 15th July 2018

4.45pm: Concert and 6.00pm: Evensong
(No charge)



The Oakville Singers is a chamber choir based in Droitwich Spa, Worcestershire. Members are drawn from across the South Midlands and the name Oakville derives from SellyOAK and BourneVILLE where the choir began, under the direction of Roger Gay, in 1965, with just a few singers. It now has a membership of over 40.

Oakville performs both sacred and secular music of all styles. They have sung at most of the Cathedrals in the UK as well as tours abroad singing in the Cathedrals of Notre Dame -Paris, Chartres, Brussels, Cologne and Aachen.

Ivan Oliver, who took over as musical director of the choir in 2005, was, as a treble, Head Chorister of The Worcester Cathedral Voluntary Choir and the Bishop of Worcester's Chorister. He is now organist at both Claines Parish Church and St. Oswald's Chapel in Worcester and accompanist to a number of local musical groups. The choir is proud to work closely with local schools, giving children the opportunity to take part in concerts and perform with an adult choir -an experience that many of them would not otherwise have.

Victoria Barlow, the choir's accompanist, is an accomplished pianist and organist. She has accompanied the choir in rehearsal, concerts and cathedrals for many years.

Over the years, Oakville have raised many thousands of pounds for charity, including playing a major part in raising over £15,000 for CLIC Sargent with a concert in Worcester Cathedral in 2014.

Lights of Love Recorded for the benefit of St Richard's Hospice, Worcester. The CD includes works by Edward Elgar, Gerald Finzi, Ralph Vaughan Williams, Bob Chilcott and René Clauson. The CD will be on sale at £10.

Bentley Pauncefoot WI

Although, on the surface, our June Meeting was devoted to chocolate, members also learned a great deal about the Quakers as a bonus. Alan Thornton told us “the Bournville Story” and presented an archive film from the 1950’s which showed the making of chocolates and biscuits from start to finish. It was quite a difficult evening for those of us on a diet as we were suddenly assailed by powerful cravings for chocolate as lots of tempting delights moved slowly down the assembly line.

Rising above this, we concentrated on the history of the business. It is interesting that many chocolate manufacturers were started by Quakers; not just Cadburys, but also Terrys and Rowntrees. Huntley and Palmers and Lloyds Bank were also started by Quakers. This may have been because at the time Quakers were excluded from the professions, could not go to the Universities so that business was the only alternative.

John Cadbury began to sell tea, coffee and chocolate from a shop in Birmingham in 1824. From the beginning, consideration was shown to employees by instituting a half day closing. The firm prospered under the regime of John’s sons and in 1878 George Cadbury moved the factory out to Bournbrook which was renamed Bournville as it sounded classier. George believed that “No man or woman should work where roses cannot grow”.

A new factory was constructed along with a model village designed to improve the living conditions of Cadburys’ employees. A school, college and medical facilities were also provided. Bank accounts were opened for workers and George Cadbury put money in to start them off. In many ways George was ahead of his time because he believed in equality for women and allowed unions; he had nothing to fear from them because he paid above the going rate. In 1908 he put Cadbury money into the Pension Alliance which was fighting for the introduction of an old age pension.

Now when we look at a bar of Cadbury Milk we can remember, and perhaps respect, the altruism of past generations of chocolate manufacturers. It wasn’t just about the profit motive!

Lynne Reading

Registers

Baptisms

June 17 Leo John TROTH
June 24 Ivy OWEN



Funerals

June 8 Edward Allan Douglas HORTON



	Sidesmens' Rota	Flowers
July 1	11.00am E Price and P Hopkins 6.00pm P Hopkins	Angela Rigby
July 8	8.00am G R Underhill 11.00am J Oldaker and V Richardson 6.00pm M Price	Fiona Boyles
July 15	11.00am G Price and L Parkes 6.00pm P Hopkins	Karen Barnett
July 22	8.00am D Hall 11.00am D Stubbings and P Hopkins 6.00pm T Powell	Sheelagh Keen
July 29	11.00am V Richardson and P Hopkins 6.00pm ('Songs of Praise' at St. Mary's)	Jane Oldaker
August 5	11.00am E Price and P Hopkins 6.00pm P Hopkins	Karen Barnett
August 12	8.00am G R Underhill 11.00am J Oldaker and L Parkes 6.00pm M Price	Pat Hopkins
August 19	11.00am V Mackenzie and G Price 6.00pm P Hopkins	Norita Young
August 26	8.00am D Hall 11.00am D Stubbings and P Hopkins	Vivien Mackenzie



Welcome!

TabbyCats Pet Hotel is a licensed family run boarding establishment designed and built around the security, comfort and needs of its feline only guests . . . home from home

TabbyCats
Pet Hotel

33 Brotherton Avenue,
Webheath, Redditch, B97 5SA
Tel: 07971 633732 • Email:
tabbycatspethotel@gmail.com

Opening Hours
9.30am to 12 Noon
and
4.30pm to 5.30pm

Except
Thursday & Sunday
9.30am to 12 Noon



'Though it is the smallest of all seeds, yet when it grows, it is the largest of garden plants and becomes a tree, so that the birds come and perch in its branches.' Matthew 13: v 32

Pips

at St. Philip's Church, Webheath

Stories, Songs and Games For 3-7 year olds

Every 2nd Thursday of the month
3.45pm - 4.40pm

Starting with a drink and a biscuit!



St. Philip's, Church Road, Webheath, B97 5PD



www.stphiloswebheath.org.uk

Contact Rev. Richard Clark (07970 823462) email: trhredditch@gmail.com



St Mary's Church

St Mary's is a countryside Church located in Lower Bentley.

St Mary's is licensed to Publish Banns and for the

Solemnization of Marriage.

St Mary's is ideal for small, intimate weddings, being able to accommodate up to fifty guests.

For further information contact

Jane Hall, Parish Clerk
on 07980 358252 or email:
contact@tardebiggechurch.org.uk



*'Appreciate the difference of
a family owned company,
serving the community for 100 years'*

James Giles 
and Sons Ltd Est.1916

The Complete Funeral Directors



01527 872318
jamesgilesandsonsltd.co.uk



24 Stourbridge Road, Bromsgrove, Worcestershire B61 0AE

HAPPY BIRTHDAY!

July 10 Doreen Underhill
July 24 Rosemary Troth
August 2 Robert Barnett
August 4 Rosalind Chambers
August 9 David Taylor
August 9 Thelma Skelly
August 9 Marcus Milton



August 3 Connie and Bob Swann
August 16 Karen and Robert Barnett



Listening Service

for those affected by sexual abuse

You can expect a Listener to:

- Listen to you sensitively, help you share your experience and take what you say seriously
- Guide you to find further help, for example, if you feel you need professional counselling
- Inform you about how to raise concerns about the abuse, if you choose to do so
- Maintain confidentiality except, of course, where this is restricted by the requirements of the law

I will listen - you will be heard

What is meant by 'confidentiality'?

- Confidentiality and secrecy do not mean the same thing
- Confidentiality is of the highest importance but it cannot be absolute in every circumstance
- Some agreed factual information that the meeting has occurred will be recorded and held securely and confidentially
- Any revelation that raises the concern of the listener, that the person being listened to has abused or is a potential abuser, must be referred to the Diocesan Safeguarding Adviser in line with national policy and our legal obligations

Listening Service

For further information on our Listening Service please contact Diocesan Safeguarding Adviser Hilary Highton
T: 07495 060869 E: hhighton@cofe-worcester.org.uk
www.cofe-worcester.org.uk

Complaints: www.cofe-worcester.org.uk/diocesancompendium/safeguarding/complaints-whistleblowers/



Kingdom People
Love • Compassion • Justice • Freedom
www.churchofengland.org



THE CHURCH
OF ENGLAND
DIOCESE OF
WORCESTER



**Letter from the
Archdeacon of Dudley
The Venerable Nikki Groarke**

Frequent reports of how lonely we are, across all ages and nations, have dominated the news for months. We live in lonely times. Increasing numbers of elderly people are living alone for longer. Many young people describe acute senses of loneliness. People are lonely in both in our cities and in rural areas, so much so that loneliness is now considered a public-health issue, with some commentators declaring that "the world is suffering from an epidemic of loneliness."

Recent studies assert that loneliness is hazardous to our health, disrupting sleep, increasing stress and inflammation, and weakening immune systems. It's also associated with cognitive decline, heart disease, and greater frailty later on in life. With a significant effect on mortality rates, loneliness is now considered a public health threat potentially more harmful than obesity and as bad as smoking. It's especially ironic that as we are globally connected to the worldwide village through social media, we are somehow more socially isolated than ever.

As church communities, we can and really should be part of the solution, reaching out to those who are alone and inviting them into the family of God. During the recent archdeacons visitations, I heard heart-warming stories of churches signing up as 'places of welcome', offering cake, coffee and chatter sessions, or knit and natter gatherings. Community is being built as people experience the loving welcome of church members not just on Sundays, but as our church buildings are used as places of connection and outreach during the week too.

Saint Paul says in his letter to the Corinthian church that 'whoever loves God is known by God'. (1 Corinthians 8:3) As his people, we can find security and comfort in the knowledge that we are never alone, God knows us and sees our comings and goings (Psalm 139), even if we feel alone and that no-one else cares. But God's promise to place the lonely in families is fulfilled when we, as his body on earth, reach out to those who are alone for whatever reason, loving and welcoming them, listening, and enabling them too, to experience being known by God, and cared for by his people.

Nikki Groarke



'The Power of Love' -

Bishop Michael Curry's sermon at the wedding of Prince Harry and Meghan Markle 19th May 2018 at St. George's Chapel, Windsor

Song of Songs 8: 6-7

And now in the name of our loving, liberating and life-giving God, Father, Son and Holy Spirit. Amen.

From the Song of Solomon, in the Bible:

*Set me as a seal upon your heart, as a seal upon your arm;
for love is strong as death, passion fierce as the grave.
Its flashes are flashes of fire, a raging flame.
Many waters cannot quench love, neither can floods drown it.*

Song of Songs 8: 6-7

The late Dr Martin Luther King, Jr. once said and I quote: "We must discover the power of love, the redemptive power of love. And when we discover that, we will be able to make of this old world a new world, for love is the only way."

There's power in love. Don't underestimate it. Don't even over-sentimentalize it. There's power – power in love. If you don't believe me, think about a time when you first fell in love. The whole world seemed to center around you and your beloved.

Oh there's power – power in love. Not just in its romantic forms, but any form, any shape of love. There's a certain sense in which when you are loved, and you know it, when someone cares for you, and you know it, when you love and you show it – it actually feels right. There's something right about it.

There is something right about it. And there's a reason for it. The reason has to do with the source. We were made by a power of love, and our lives were meant – and are meant – to be lived in that love. That's why we are here.

Ultimately the source of love is God himself: the source of all of our lives.

There's an old medieval poem that says, "Where true love is found, God himself is there."

The New Testament says it this way: "Beloved, let us love one another, because love is of God, and those who love are born of God and know God. Those who do not love do not know God." Why? "For God is love." (1 John 4:4-8)

There's power in love. There's power in love to help and heal when nothing else can.

There's power in love to lift up and liberate when nothing else will. There's power in love to show us the way to live.

Set me as a seal on your heart... a seal on your arm, for love is as strong as death.

But love is not only about a young couple. Now the power of love is demonstrated by the fact that we're all here. Two young people fell in love, and we all showed up! But it's not just for and about a young couple, who we rejoice with. It's more than that.

Jesus of Nazareth on one occasion was asked by a lawyer to sum up the essence of the teachings of Moses, and he went back and he reached back into the Hebrew scriptures, to Deuteronomy and Leviticus, and Jesus said: "You shall love the Lord your God with all your heart, all your soul, all your mind and all your strength. This is the first and great commandment. And the second is like it: Love your neighbour as yourself."

And then in Matthew's version, he added, he said: "On these two, love of God and love of neighbour, hang all the law, all the prophets, everything that Moses wrote, everything in the holy prophets, everything in the scriptures, everything that God has been trying to tell the world... love God, love your neighbours, and while you're at it, love yourself."

Someone once said that Jesus began the most revolutionary movement in human history: a movement grounded in the unconditional love of God for the world – and a movement mandating people to live that love, and in so doing to change not only their lives but the very life of the world itself!

I'm talking about power. Real power. Power to change the world.

If you don't believe me, well, there were some old slaves in America's Antebellum South who explained the dynamic power of love and why it has the power to transform. They explained it this way. They sang a spiritual, even in the midst of their captivity. It's one that says "There's a balm in Gilead..." a healing balm, something that can make things right.

"There is a balm in Gilead to make the wounded whole," and one of the stanzas actually explains why. They said:

"If you cannot preach like Peter,
And you cannot pray like Paul,
You just tell the love of Jesus,
How he died to save us all."

Oh, that's the balm in Gilead!

This way of love, it is the way of life. They got it! He died to save us all. He didn't die for anything he could get out of it. Jesus did not get an honorary doctorate for dying. He didn't... he wasn't getting anything out of it. He gave up his life, he sacrificed his life, for the good of others, for the good of the other, for the wellbeing of the world... for us.

That's what love is. Love is not selfish and self-centred. Love can be sacrificial, and in so doing, becomes redemptive. And that way of unselfish, sacrificial, redemptive love changes lives, and it can change this world.

If you don't believe me, just stop and imagine. Think and imagine a world where love is the way.

Imagine our homes and families where love is the way.

Imagine our neighborhoods and communities where love is the way.

Imagine our governments and nations where love is the way.

Imagine business and commerce where this love is the way.

Imagine this tired old world where love is the way.

When love is the way – unselfish, sacrificial, redemptive.

When love is the way, then no child will go to bed hungry in this world ever again.

When love is the way, we will let justice roll down like a mighty stream and righteousness like an ever-flowing brook.

When love is the way, poverty will become history.

When love is the way, the earth will be a sanctuary.

When love is the way, we will lay down our swords and shields, down by the riverside, to study war no more.

When love is the way, there's plenty good room - plenty good room - for all of God's children. 'Cos when love is the way, we actually treat each other, well... like we are actually family.

When love is the way, we know that God is the source of us all, and we are brothers and sisters, children of God.

My brothers and sisters, that's a new heaven, a new earth, a new world, a new human family.

And let me tell you something, old Solomon was right in the Old Testament: that's fire.

Pierre Teilhard de Chardin – and with this I will sit down, we gotta get you all married [laughter] – French Jesuit Pierre Teilhard de Chardin was arguably one of the great minds, great spirits of the 20th century. Jesuit, Roman Catholic priest, scientist, a scholar, a mystic.

In some of his writings, he said, from his scientific background as well as his theological one, in some of his writings he said - as others have - that the discovery, or invention, or harnessing of fire was one of the great scientific and technological discoveries in all of human history.

Fire to a great extent made human civilization possible. Fire made it possible to cook food and to provide sanitary ways of eating, which reduced the spread of disease in its time.

Fire made it possible to heat warm environments and thereby made human migration around the world a possibility, even into colder climates.

Fire made it possible... there was no Bronze Age without fire, no Iron Age without fire, no Industrial Revolution without fire. The advances of fire and technology are greatly dependent on the human ability and capacity to take fire and use it for human good.

Anybody get here in a car today? An automobile? Nod your heads if you did – I know there were some carriages. [Laughter] But those of us who came in cars, fire – controlled, harnessed fire – made that possible.

I know that the Bible says, and I believe it, that Jesus walked on the water. But I have to tell you, I did not walk across the Atlantic Ocean to get here. Controlled fire in that plane makes it possible.

Fire makes it possible for us to text and tweet and email and Instagram and Facebook and socially be dysfunctional with each other. [Laughter]

Fire makes all of that possible, and de Chardin said fire was one of the greatest discoveries in all of human history. And he then went on to say that if humanity ever harnesses the energy of fire again, if humanity ever captures the energy of love – it will be the second time in history that we have discovered fire.

Dr King was right: we must discover love – the redemptive power of love. And when we do that, we will make of this old world, a new world.

My brother, my sister, God love you, God bless you, and may God hold us all in those almighty hands of love.

Bishop Michael Curry
(The Presiding Bishop of
The Episcopal Church)



Sudoku

	9	5			3	2	1	
7						5		9
2	8		6	9				4
							7	
			2	1	8			
	5							
1				4	2		8	5
9		8						7
	4	6	3			1	9	

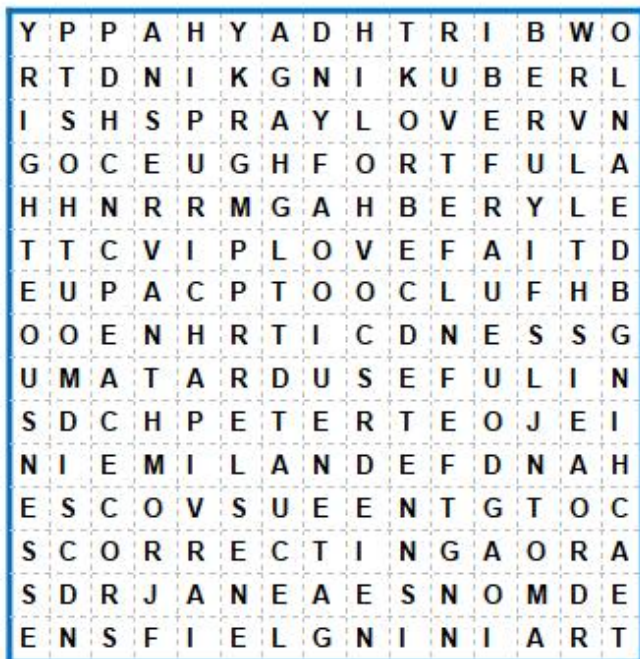
Solution next month

3	7	9	4	5	2	8	6	1
1	8	6	3	7	9	5	4	2
4	2	5	6	8	1	9	3	7
9	1	2	7	4	5	6	8	3
6	4	3	2	1	8	7	5	9
8	5	7	9	3	6	1	2	4
7	3	8	1	6	4	2	9	5
2	6	4	5	9	7	3	1	8
5	9	1	8	2	3	4	7	6

Last month's solution

Word Search

'All scripture is God-breathed and is useful for teaching, rebuking, correcting and training in righteousness, so that the servant of God may be thoroughly equipped for every good work. **2 Timothy 3: 16-17**



SCRIPTURE

USEFUL

TEACHING

REBUKING

CORRECTING

TRAINING

RIGHTOUSNESS

SERVANT

GOOD

Words to be found may be forward, backward, vertical or diagonal within the puzzle

J.E.H.



Registered charity no. 1012868

www.cherishfund.org.uk

The Cherish Fund is a UK based charity which has the provision of education for African children and young people as its primary objective.

The charity is also helping to support a clinic in Uganda; many of the patients are disabled children from local villages.

Your support would be very much appreciated!



RCA SERVICES



ESTABLISHED
36 YEARS

**HEATING ELECTRICAL PLUMBING
GAS • OIL • LPG**

All Makes of Boiler Serviced & Repaired
Domestic Heating & Plumbing
Radiator & Boiler Powerflush Cleaning
Fuseboards • Sockets • Lighting
Thermal Storage Systems and AGA's

All Work Guaranteed

Fully Insured

01527 834 953

07976 270 240



www.rcaservices.co.uk

Approved Contractor



WORCESTER
Bosch Group

Gledhill



Tardebigge Community Hall

This new, superbly equipped building, large hall, committee room and modern kitchen, is available for hire. Suitable for wedding receptions, parties, and meetings.

For further information, please contact **Lynn Denyer**

Tel: 07763 446902

MGO



Gardening Services

Professional gardening services – all work considered, including:

- . Lawn Mowing . Hedge Cutting
- . General Weeding . Border Maintenance
- . Small Trees

Fully insured, CRB checked – reliable service guaranteed

For a free quote contact Matthew Massey

Tel. 01527 836149 / Mobile: 07875 973601

Email: mgoservices@yahoo.co.uk

OAP + DISABLED
DISCOUNTS

NEED A NEW BOILER? UP TO 10 YEARS' GUARANTEE 5 YEARS' FREE SERVICING WITH EVERY NEW WORCESTER BOSCH BOILER

Order your Worcester Bosch Boiler NOW from your local Worcester Bosch accredited showroom and receive: **FREE** servicing for 5 years worth £350.

All Worcester Bosch Boilers also include a *minimum* 7 years and up to 10 years parts and labour guarantee.

TYPICALLY £1000 CHEAPER THAN THE LEADING BRAND!

Other boilers
available from
£1100 + vat,
fitted

7 rad full
installs from
£2500 + vat

☎ Call us for an appointment for
your free written quotation.

f newboilersshowroom

@boilersshowroom

Save
£350



Visit Our Showroom
FREE Advice & Quotes

GAS
safe
REGISTER
217817

01527 539 478

or visit newboilersshowroom.co.uk



All Aspects

Central Heating Showroom

ALL YOU NEED UNDER ONE ROOF

• OAP & Disabled Discounts • Domestic & Commercial • Competitive Prices



All Aspects

Plumbing

- Leaks & overflows
- Tanks & Cylinders
- Taps & Toilets
- Sinks & Showers



All Aspects

Central Heating

- Gas Oil & LPG
- Combi, Conventional & System Boiler Installation
- Repairs & Servicing
- Powerflushing



All Aspects

Drainage

- Drains, Sinks, Toilets Unblocked
- High pressure Water Jetting
- Camera Surveys
- Excavation Work



All Aspects

Gas Services

- Fires, Cookers & Waterheaters
- Repairs & Servicing
- Landlord Certificates
- Installations

Call 01527 539 478 or go online!
www.AllAspectsUK.co.uk



All Aspects

All Trades under ONE Roof

www.AllAspectsUK.co.uk

Huntleys Funeral Services

A life well remembered lives on.



A funeral is a time to say goodbye and to remember the life of a person you love. It's our privilege to be at your side.

You can talk to us any time, day or night or for further information visit us at

huntleysfunerals.co.uk

58 Ipsley Street,
Smallwood
Redditch B98 7AE
01527 62106

funeralpartners.co.uk



Funeral Partners


WHERE
NEXT

Garden Centre

Opening hours
Mon-Fri 9 to 5, Sat 10 to 4

Woodwork
Packing / assembly
Landscaping / maintenance

Support your local charity which offers people with special needs the opportunity to experience the real world of work

Wellesbourne Close,
Easemore Road, Redditch B98 8ER
(01527 69955)



A. Pullen

• MEMORIALS •

*Additional Inscriptions &
Renovations*

*All work is to the highest standard
and carried out at our workshop*

Showroom and Workshop

338 Alcester Road, Burcot

Bromsgrove B60 1BH

Tel: (01527) 876200

Email: apullenmemorials@hotmail.co.uk

BRAMM

BRITISH REGISTER OF ACCREDITED
MEMORIAL MASON



Tardebigge Court

A unique retail and business park
of specialist shops, trades and services

- ~ fitted furniture, upholstery, haberdashery
- ~ fireplaces and stoves
- ~ cake decorating classes
- ~ wedding dresses, shoes, flowers and stationery
- ~ designer and prescription eyewear
- ~ memorial and keepsake jewellery
- ~ hair and beauty salon, and gents barbers
- ~ sports injury physiotherapy and massage
- ~ sports clothing and equipment
- ~ musical instruments and tuition
- ~ canine massage therapy
- ~ studio portrait photography
- ~ motor and building services
- ~ Alestones real ale micropub
- ~ and the New Tardebigge Court Café

Plenty of free parking

Visit www.tardebiggecourt.co.uk | Phone 07768 364052

Tardebigge Court, Hewell Lane, Tardebigge, Worcs B97 6QW



St. Bartholomew's,
Church Lane,
Tardebigge, B60 3AH

Directory

St. Mary's,
High Elms Lane,
Lower Bentley, B60 4JA

Church Wardens

Chris Milton, 86 Finstall Road, Bromsgrove, B60 3BX
(01527 871132 & 07825 749767) cmilton@btinternet.com

Dean Hall, 73 Appletree Lane, Redditch, B97 6TD
(07985 165168) deanrehall@gmail.com

Treasurer	Kate Healey kate@katehealey.co.uk	07583 607094
PCC Secretary	Vivien Mackenzie	07727 293664
Parish Clerk & Electoral Roll Officer	Jane Hall janehall73@gmail.com	07980 358252
Choir Master	Robert Barnett	01527 542491
Organist	Dudley Fowkes	
Safeguarding Officer & Sunday Funday	Kay Middleton kmi@northbromsgrove.worcs.sch.uk	07867 492938
Central Communications (Magazine & Enquiries)	c/o Jane Hall contact@tardebiggechurch.org.uk	07980 358252
Pastoral Care	Gail Teague (co-ordinator)	01527 541991
Envl. Scheme & Gift Aid	Lucy Parkes	01527 871132
Magazine Distribution	Jane & Sally Oldaker	0121 445 1844
Sidesman's Secretary	Pat Hopkins	01527 67099
Sexton	Michael Price	01527 544152
St. Mary's Church, Lower Bentley	Sarah Carless Marion Wormington	01527 821514 01527 880666
Tardebigge First School	Headteacher: Julie Cutler	01527 872886
Church Hall Bookings	Angela Rigby	01527 872174
Community Hall	Lynn Denyer	07763 446902
Bentley Village Hall	June Brazier	01527 403950

Clergy Team

Incumbent/Team Rector: Rev. Richard Clark
The Vicarage, Webheath, Redditch B97 5PD
(01527 543967 & 07970 8234620 trhtredditch@gmail.com)

Rev. Allison Davies (Assistant Curate) (01527 60892)

Rev. Paul Irving (Team Vicar, St. Leonard's, Beoley & Education) (01527 435683)

Rev. Paul Lawlor (01527 62375)
(Rural Dean, Team Vicar, St. Stephen's & Town Centre Chaplain)

An Independent Family Owned Funeral Directors



THOMAS BROTHERS

The only family owned funeral homes in Redditch, Wythall & Alvechurch. We provide a friendly, dignified service paying special attention to detail.



REDDITCH OFFICE - Telephone: 01527 547 777
494 Evesham Road, Redditch, Worcestershire. B97 5JF



ALVECHURCH OFFICE - Telephone: 0121 445 3422
12A Red Lion Street, Alvechurch, Worcestershire. B48 7LF

WYTHALL OFFICE - Telephone: 01564 822 001
100 Alcester Road, Wythall, Birmingham, West Midlands. B47 5HA

www.thomasbrothers.co.uk
Email: advertising@thomasbrothers.co.uk

"A family concern"

JONATHAN SPROULE AND SONS LTD

(Master Builders)



**SPECIALISTS IN INDIVIDUAL CHARACTER,
TIMBER FRAME & PERIOD PROPERTIES**

20 Years Experience

**HOUSE EXTENSIONS. RENOVATIONS
CONVERSIONS & ALTERATIONS
BARN CONVERSIONS
TIMBER / OAK FRAMED GARAGES**



07973 445048 & 07976 826065

FAX: 01527 821452

Advertise in the Magazine

Annual or monthly rates (annual shown below) **50% discount for charities**

Format	2016 Cost
Black & White - full page	£ 110.00
Black & White 1/2 page	£ 82.50
Black & White 1/4 page	£ 55.00
Black & White 1/8 th page	£ 33.00
Colour - full page	£200.00
Colour - inside cover	£250.00
Colour 1/2 page	£150.00
Colour 1/4 page	£100.00
Colour 1/8 th page	£ 60.00

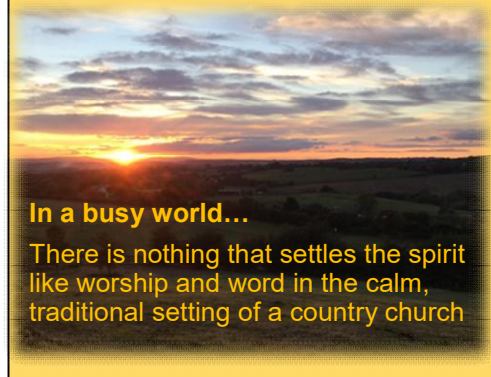
If you are interested please call Dean Hall on **07985 165168** or email your advert to us:

Evensong



From the Book of Common Prayer
Every 2nd, 3rd & 4th Sunday at 6pm

**St. Bartholomew's Church,
Tardebigge**



In a busy world...

There is nothing that settles the spirit like worship and word in the calm, traditional setting of a country church



Tutnall Hall is an 18th century Georgian house with fabulous landscape gardens and views over Worcestershire, and is home to 35 residents.

Tutnall Hall

Spring View Care

A high quality local nursing home

At Tutnall Hall, we provide small homely environments where our residents are at the heart of everything we do. It is our aspiration to provide nursing homes where we ourselves would be happy to stay.



Spring View Care is proud to announce that Tutnall Hall was listed as one of the top 20 care homes in the West Midlands in 2015



Tutnall Hall: Tutnall Lane, Tutnall, Bromsgrove B60 1NA **Tel: 01527 875 854**
Website: www.springviewcare.co.uk Email: mercy@springviewcare.co.uk

© 2015